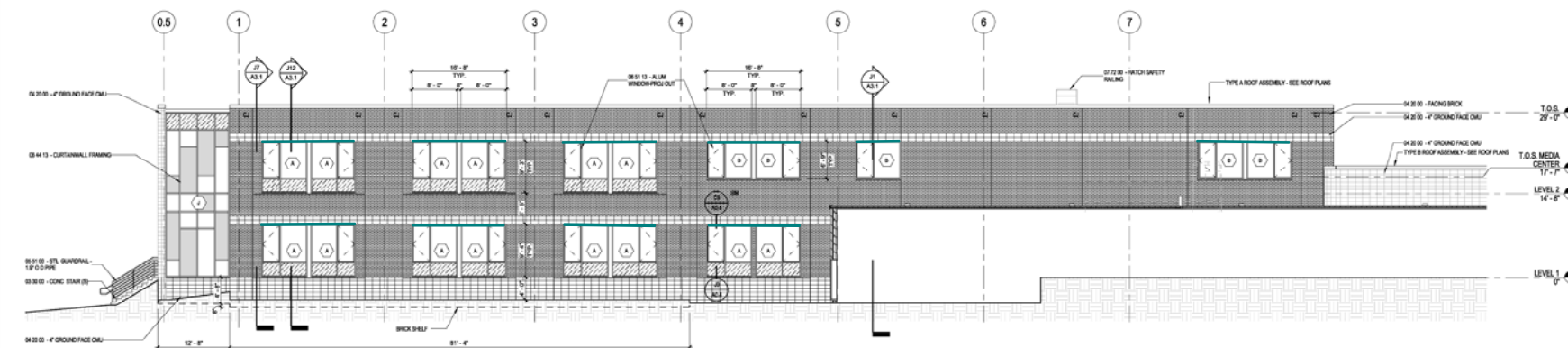


DOOR & FRAME SCHEDULE - EXISTING						
MARK	FROM ROOM		DOOR		FRAME	COMMENTS
	No.	NAME	SIZE		DETAIL	
			WD	HT	HARDWARE	
0010			3'-0"	7'-0"	10	NEW HARDWARE ON EXISTING DOORS
0010	PO	EXISTING WAREHOUSE	6'-0"	7'-0"	16	NEW HARDWARE ON EXISTING DOORS
0010	W	EXISTING CATERING/PAUSE ROOM	3'-0"	7'-0"	11	NEW HARDWARE ON EXISTING DOORS

COPYRIGHT © 2014 BY LAW, LITIGATING PROFESSIONALS
ASSOCIATION. ALL RIGHTS RESERVED.

[illegible]

F1	SOUTH ELEVATION
----	-----------------



J1 NORTH ELEVATION (CLASSROOMS)

**East Rochester
Elementary School**

773 Portland Street
Rochester, NH 03868

[illegible]

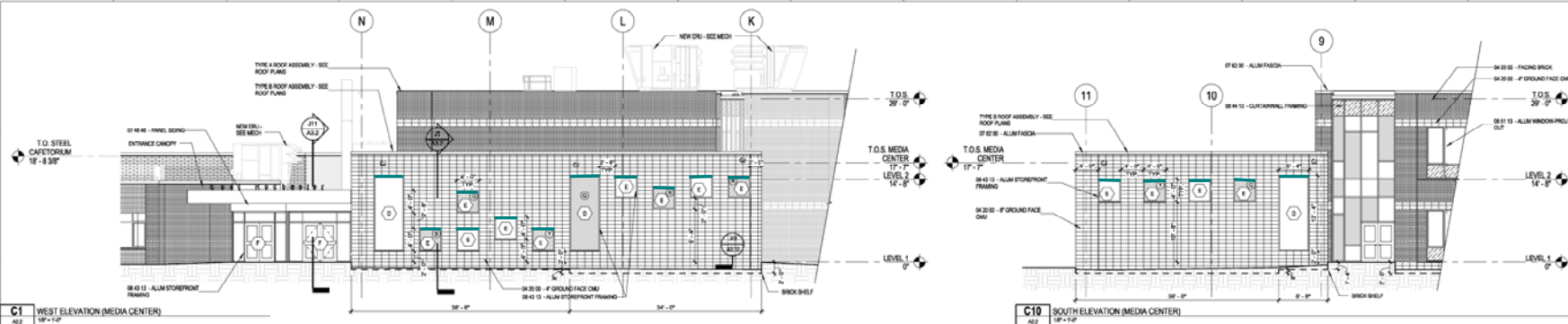
CONTENT:
EXTERIOR ELEVATIONS

DRAWN BY:	URS
PROJECT NO:	13-022-0
DATE:	04-01-201
REVISED:	X
SCALE:	As indicated

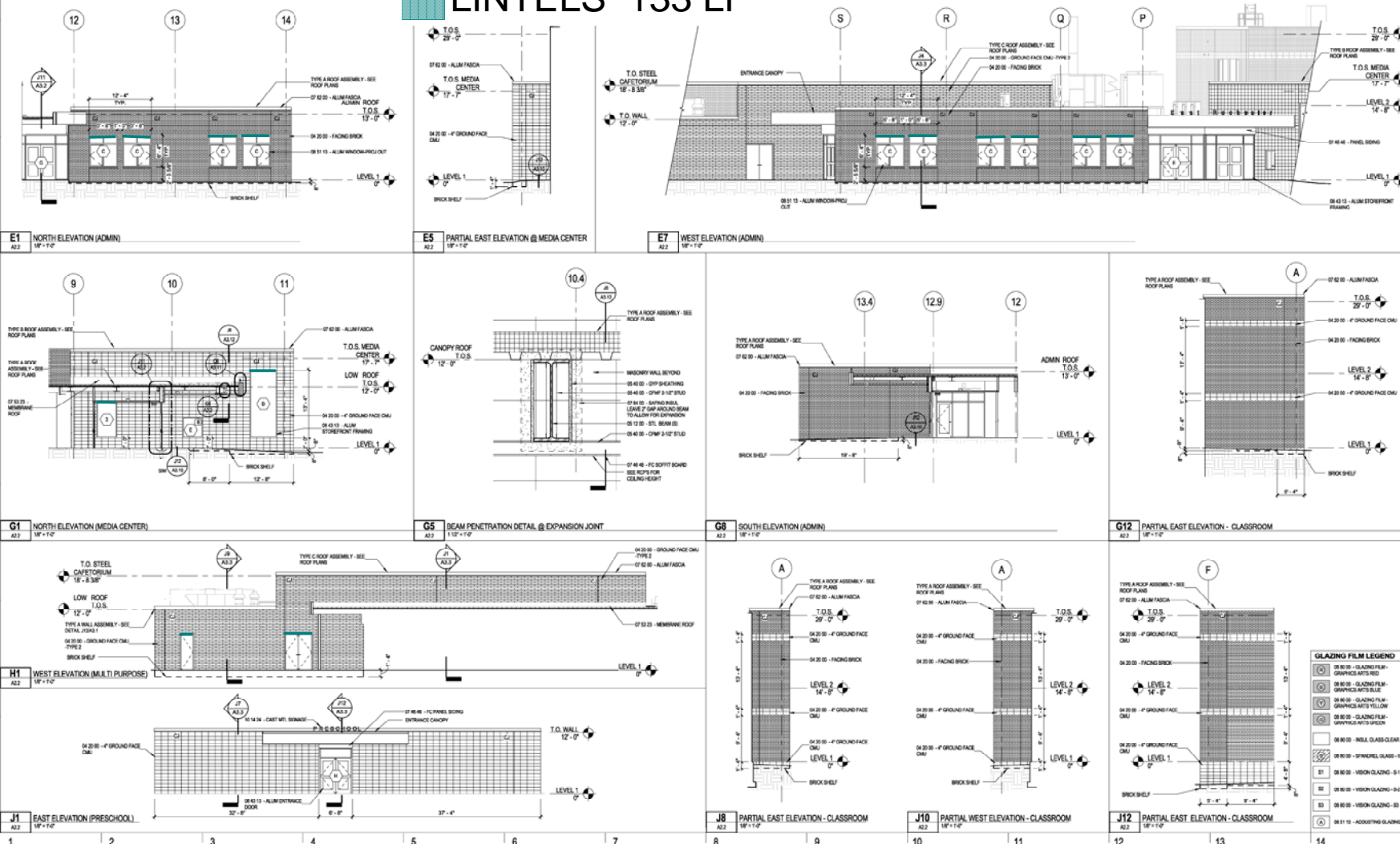
A2.1

Project Phase
CONSTRUCTION DOCUMENTS

COPYRIGHT © 2014 BY LANGE/STANDERSON PROFESSIONAL ASSOCIATION. ALL RIGHTS RESERVED.



LINTELS 133 LF



Rochester School Department

East Rochester
Elementary School773 Portland Street
Rochester, NH 03668

NO.	DESCRIPTION	DATE

CONTENT:
EXTERIOR ELEVATIONS

DESIGN BY:	LBPA
PROJECT NO:	13-023-30
DATE:	04-01-2014
REVISED:	05
SCALE:	As Indicated

A2.2

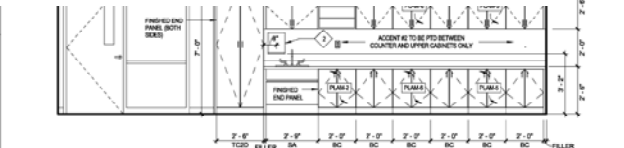
Project Name:
CONSTRUCTION DOCUMENTSCOPYRIGHT © 2014 BY L.A. VALLEE/BRENSINGER ARCHITECTS, INC.
ALL RIGHTS RESERVED.
NO REPRODUCTION WITHOUT PERMISSION.

METAL STRUCTURAL BEAMS PRIME & PAINT PER LF 38 LF

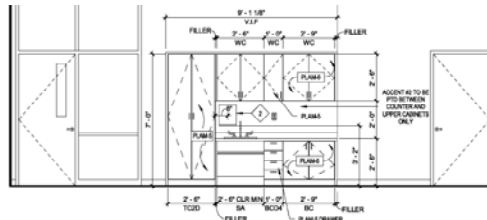
S & V WOOD TRIM 54 LF

LAVALLEE/BRENSINGER ARCHITECTS

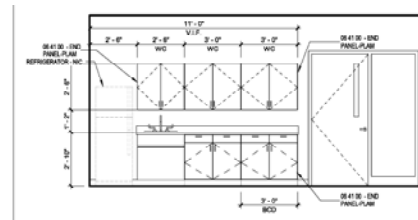
155 Dow Street, Suite 400, Manchester, NH 03101
45 Cambridge Street, Charlestown, MA 02129
NH: 603.622.5400 MA: 617.388.2325 www.LBPA.com



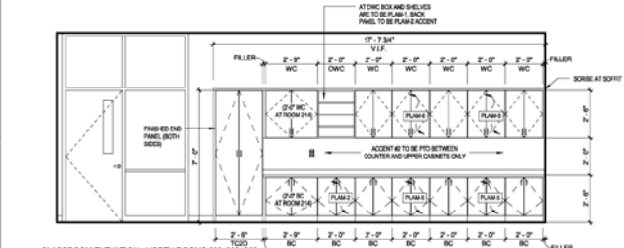
B1 CLASSROOM ELEVATION - NORTH ROOMS 102 OPP 104, 106



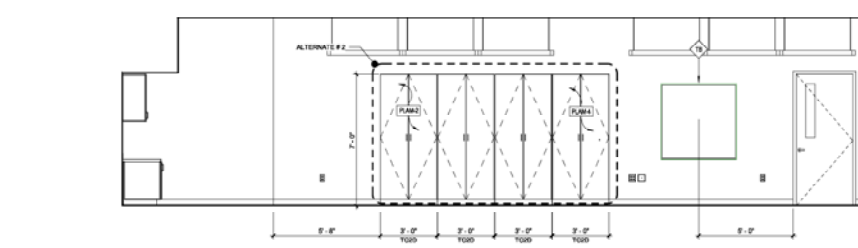
B6 CLASSROOM ELEVATION - SOUTH ROOMS 103, 105 OPP 101



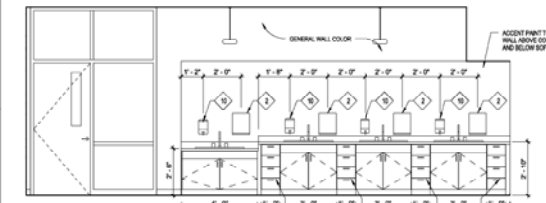
B11 FACULTY ROOM ELEVATION - SOUTH



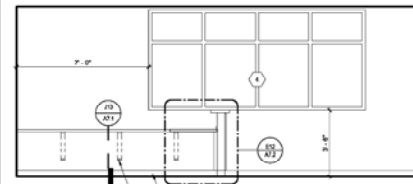
D1 CLASSROOM ELEVATION - NORTH ROOMS 202, 203, 205



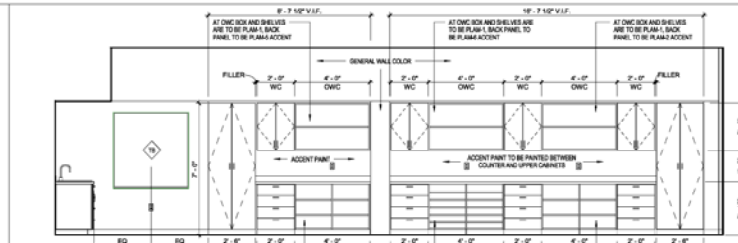
D6 CLASSROOM ELEVATION - WEST ROOM 101, 103 OPP 105



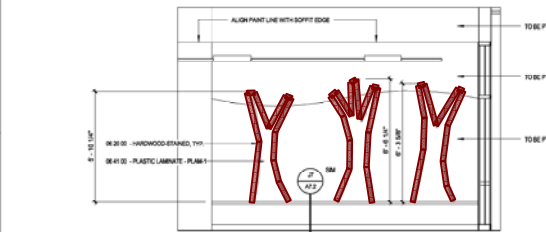
F1 ART ROOM ELEVATION - NORTH



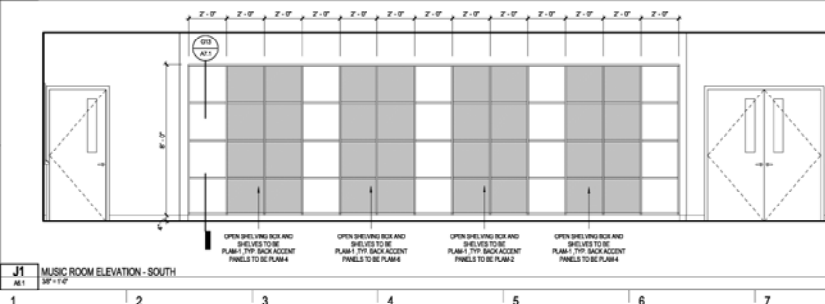
F5 RECEPTION + WORKROOM ELEVATION - EAST



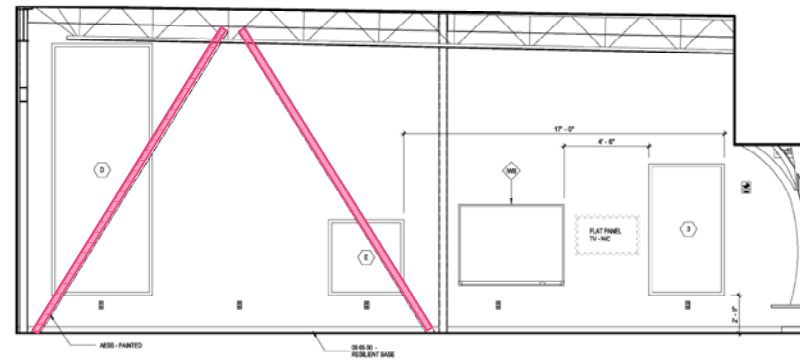
F9 ART ROOM ELEVATION - EAST



H1 CLASSROOM CORRIDOR BENCHES



J1 MUSIC ROOM ELEVATION - SOUTH



J8 MEDIA CENTER ELEVATION - NORTH

Rochester School Department

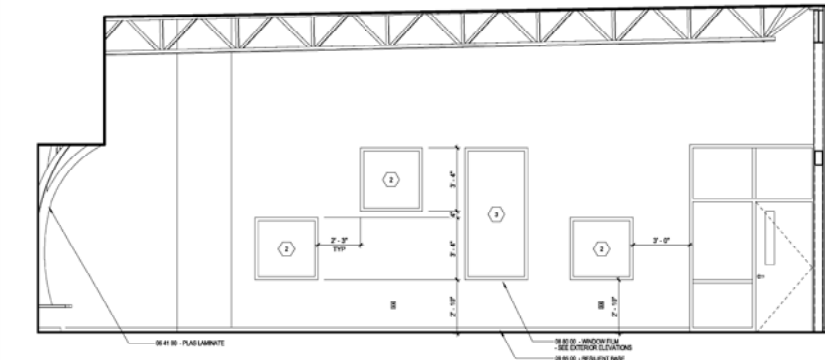
East Rochester
Elementary School

773 Portland Street
Rochester, NH 03608

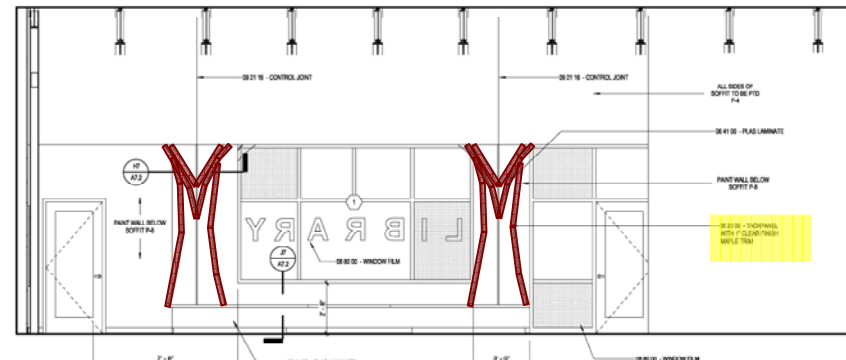
NO.	DESCRIPTION	DATE

CONTENTS	INTERIOR ELEVATIONS
DESIGNED BY:	CSG/CMA
PROJECT NO:	19-023-00
DATE:	06-01-2014
REVISED:	XX
SCALE:	3/8" = 1'-0"
Project Name	
CONSTRUCTION DOCUMENTS	
COPYRIGHT © 2014 BY JAMES BRENSINGER PROFESSIONAL ARCHITECTURE, INC. ALL RIGHTS RESERVED. NO REPRODUCTION WITHOUT PERMISSION.	

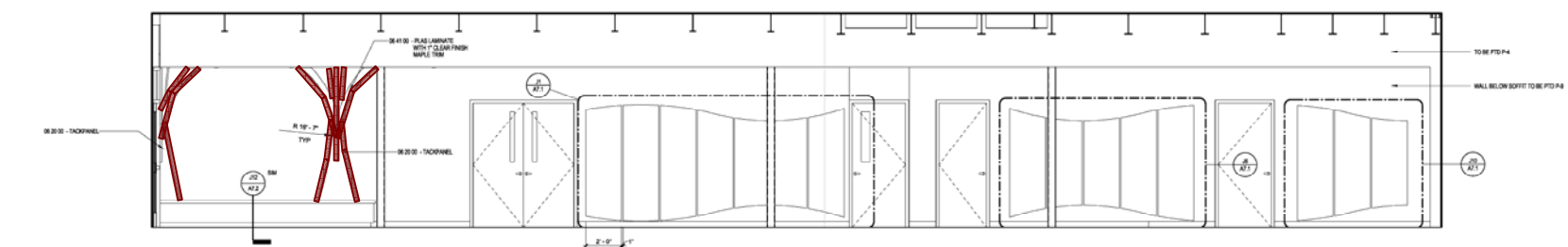
A6.1



C1 MEDIA CENTER ELEVATION - SOUTH
ME2 3/8" = 1'-0"

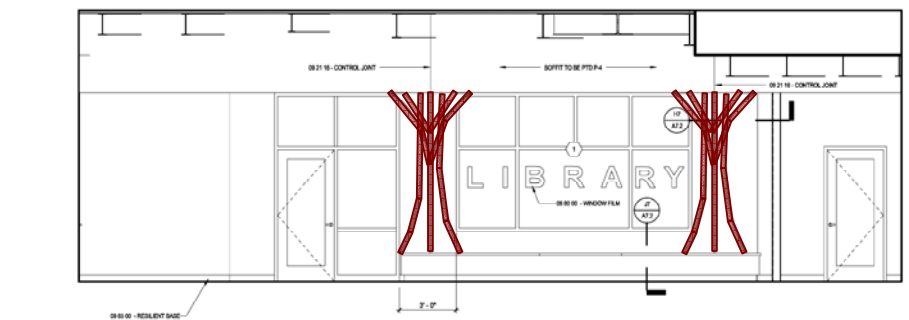


C6 MEDIA CENTER ELEVATION - EAST
ME2 3/8" = 1'-0"

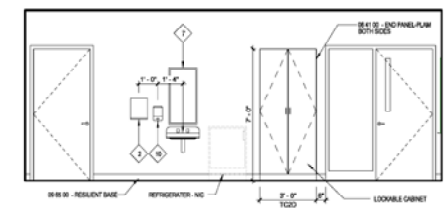


F1 PARTIAL LOBBY WAITING AREA ELEVATION - EAST
ME3 3/8" = 1'-0"

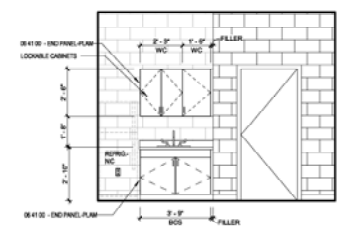
S & V WOOD TRIM 176 LF



J1 PARTIAL LOBBY WAITING AREA ELEVATION - WEST
ME2 3/8" = 1'-0"



H9 NURSE OFFICE ELEVATION - EAST
ME2 3/8" = 1'-0"



J9 PRESCHOOL NURSE'S OFFICE ELEVATION - SOUTH
ME2 3/8" = 1'-0"

A	
B	
C	
D	Rochester School Department
E	East Rochester Elementary School
F	773 Portland Street Rochester, NH 03608
G	NO. DESCRIPTION DATE
H	
I	CONTENTS INTERIOR ELEVATIONS
J	DATE: 06-01-2014 PROJECT NO: 13-023-00 SCALE: 3/8" = 1'-0"

		ID FINISH SCHEDULE - PHASE TWO							
ROOM #	ROOM NAME	FLOOR	BASE	WALLS	COUNTERTOP	CABINET	COMMENTS		
#2	STORAGE	ETR	PTM	P-1	-	-			
#3	CUSTODIAN	P-13	RB-1	P-1	-	-			
#5	EXISTING PLATFORM	ETR	ETR	SEE COMMENTS	-	-	REFER TO A1.1-P2 FOR PAINT COLORS AND LOCATIONS		
#8	EXISTING CA/ETORIUM/MULTI-PURPOSE ROOM	ETR	RB-1	SEE COMMENTS	-	-	REFER TO A1.1-P2 FOR PAINT COLORS AND LOCATIONS		
#12	EXISTING KITCHEN	ETR / PTM	ETR	P-1 / ACCENT	-	-	REFER TO A1.1-P2 FOR PAINT COLORS AND LOCATIONS		
101	CLASSROOM	ETR	ETR	ETR	ETR	ETR			
102	TOILET	ETR	ETR	ETR	ETR	ETR			
104	TOILET	ETR	ETR	ETR	ETR	ETR			
105	TOILET	ETR	ETR	ETR	ETR	ETR			
106	CORRIDOR	ETR / PTM	ETR / PTM	ETR / PTM	ETR	ETR			
107	CLASSROOM	ETR	ETR	ETR	ETR	ETR			
109	CLASSROOM	ETR	ETR	ETR	ETR	ETR			
110	VESTIBULE	ETK	ETK	ETK	ETK	ETK			
111	STORAGE	ETR / PTM	ETR / PTM	ETR / PTM	ETR	ETR			
111A	ELEC	ETR / PTM	ETR / PTM	ETR / PTM	ETR	ETR			
111B	MECH	ETR / PTM	ETR / PTM	ETR / PTM	ETR	ETR			
112	CUSTODIAN	ETR / PTM	ETR / PTM	ETR / PTM	-	-			
113	TOILET	ETR	ETR	ETR	ETR	ETR			
114	TOILET	ETR	ETR	ETR	-	-			
116A	LOBBY/WAITING AREA	REFER TO FINISH FLOOR PLAN FOR FLOOR PATTERN AND LOCATIONS	PTB	P-1, P-8 / ACCENT	-	-			
116B	VESTIBULE	CPT-1	RB-1	P-1	-	-			
118	COMPUTER LAB	REFER TO FINISH FLOOR PLAN FOR FLOOR PATTERN AND LOCATIONS	RB-1	P-1, P-8 / ACCENT	-	-	REFER TO ELEVATIONS FOR EXTENTS OF ACCENT WALLS AND SOFFITS		
120	MEDIA CENTER	REFER TO FINISH FLOOR PLAN FOR FLOOR PATTERN AND LOCATIONS	RB-1	P-1, P-8 / ACCENT	-	-			
122	VESTIBULE	REF-1	RB-3	P-14	-	-			
124	RECEPTION & WORK ROOM	MAT., CPT-1	MAT-1	P-1 FIELD, P-7 ACCENT	PLAM-4	PLAM-1 / PLAM-5	SEE ELEVATIONS FOR PLAM CABINET LOCATIONS		
124A	STORAGE	VCT-1	RB-1	P-1	-	-			
124B	CORRIDOR	VCT-1	RB-1	P-1 FIELD, P-7	-	-			
126	CONFERENCE ROOM	CPT-1	RB-1	P-1, P-7 / ACCENT	-	-			
127	OFFICE	CPT-1	RB-1	P-1	-	-			
128	OFFICE	CPT-1	RB-1	P-1	-	-			
129	NURSE	REFER TO FINISH FLOOR PLAN FOR FLOOR PATTERN AND LOCATIONS	RB-1	P-1	PLAM-2	PLAM-1			
129A	TOILET	VCT-1	RB-1	P-1	-	-			
130	FACULTY ROOM	REFER TO FINISH FLOOR PLAN FOR FLOOR PATTERN AND LOCATIONS	RB-1	P-1 FIELD, ACCENT P-7	PLAM-2	PLAM-1			
130A	TOILET	VCT-1	RB-1	P-1	-	-			
131	TOILET	PT-1	PTB	P-1	-	-			
132	TOILET	PT-1	PTB	P-1	-	-			
133	VESTIBULE	MAT-1	MAT-3	P-14	-	-			
134	RECEPTION	CPT-1	RB-1	P-1	-	-			
135	NURSE	VCT-1	RB-1	P-1 / ACCENT	PLAM-2	PLAM-1			
136	OFFICE	CPT-1	RB-1	P-1	-	-			
137	TESTING	CPT-1	RB-1	P-1	-	-			
138	CONFERENCE/OBSERVATION	CPT-1	RB-1	P-1	-	-			
139	OCCUPANCY THERAPY	ETR / PTM	ETR / PTM	ETR / PTM	ETR	ETR			
140	CLASSROOM	ETR / PTM	ETR / PTM	ETR / PTM	ETR	ETR			

LAVALLEE|BRENSINGER ARCHITECTS

156 Dow Street, Suite 400, Manchester, NH 03101
40 Cambridge Street, Charlestown, MA 02129
NH: 603.622.5450 MA: 617.398.2305 www.LBPA.com

Rochester School Department

East Rochester
Elementary School

773 Portland Street
Rochester, NH 03868

[illegible]

CONTENT

GENERAL NOTES, LEGENDS, ROOM FINISH SCHEDULES

DRAWN BY:	Autor
PROJECT NO:	13-022-00
DATE:	04-01-2014
REVISED:	XX
SCALE:	1:1

ID1.0

Project Phase
CONSTRUCTION DOCUMENTS
Copyright © 2014 by U.S. Green Building Professional Association. All rights reserved.
No part of this publication may be reproduced without prior written permission.

09 90 10 PAINT AND COATING						INTERIOR FINISH LEGEND							
P-1	TYPE: PAINT FINISH: WHITE	09 90 10.01 GENERAL WALL COLOUR REFER TO SPECIFICATIONS FOR FINISH NOTES SWE701 NATURAL CHOICE	P-13	TYPE: MAULF FINISH: WHITE	09 90 10.02 STORAGE ROOM FLOOR COLOUR SHERWIN WILLIAMS REFER TO SPECIFICATIONS FOR FINISH NOTES SWE702 WAINSTONE	VC1-1	TYPE: VINYL COMPOSITION TILE PATTERN: ARABESQUE SIZE: 12" X 12" COLOR: JAMES HANDED LIME	OPT-1	TYPE: MAULF PATTERN: BARS SIZE: 24" X 24" INSTALLATION: QUARTER TURN	CP-1	TYPE: CARPET TILE PHILADELPHIA COMMERCIAL JOHN MATHIAS BARS SIZE: 24" X 24" INSTALLATION: QUARTER TURN	PL-1	TYPE: PLASTER PHILADELPHIA COMMERCIAL JOHN MATHIAS BARS SIZE: 24" X 24" INSTALLATION: QUARTER TURN
P-2	TYPE: PAINT FINISH: WHITE	09 90 10.03 (WOOD FRAME) COLOUR SHERWIN WILLIAMS REFER TO SPECIFICATIONS FOR FINISH NOTES SWE703 LIME GREEN	P-14	TYPE: MAULF FINISH: WHITE	09 90 10.04 (TO MATCH ADMIN BRICK) SHERWIN WILLIAMS REFER TO SPECIFICATIONS FOR FINISH NOTES TBD	VC2-1	TYPE: VINYL COMPOSITION TILE PATTERN: ARABESQUE SIZE: 12" X 12" COLOR: JAMES HANDED LIME	OPT-2	TYPE: MAULF PATTERN: BARS SIZE: 24" X 24" INSTALLATION: QUARTER TURN	CP-2	TYPE: CARPET TILE PHILADELPHIA COMMERCIAL JOHN MATHIAS BARS SIZE: 24" X 24" INSTALLATION: QUARTER TURN	PL-2	TYPE: PLASTER PHILADELPHIA COMMERCIAL JOHN MATHIAS BARS SIZE: 24" X 24" INSTALLATION: QUARTER TURN
P-3	TYPE: MAULF FINISH: WHITE	09 90 10.05 SHERWIN WILLIAMS REFER TO SPECIFICATIONS FOR FINISH NOTES SWE704 MELANGE GREEN	09 20 00 TAKEABLE WALL PANEL	TWP-1	TYPE: TACK BOARD SERIES: BULLETIN BOARD COLOR: 2106	VC3-1	TYPE: VINYL COMPOSITION TILE PATTERN: ARABESQUE SIZE: 12" X 12" COLOR: JAMES HANDED LIME	OPT-3	TYPE: MAULF PATTERN: BARS SIZE: 24" X 24" INSTALLATION: QUARTER TURN	CP-3	TYPE: CARPET TILE PHILADELPHIA COMMERCIAL JOHN MATHIAS BARS SIZE: 24" X 24" INSTALLATION: QUARTER TURN	PL-3	TYPE: PLASTER PHILADELPHIA COMMERCIAL JOHN MATHIAS BARS SIZE: 24" X 24" INSTALLATION: QUARTER TURN
P-4	TYPE: MAULF FINISH: WHITE	09 90 10.07 SHERWIN WILLIAMS REFER TO SPECIFICATIONS FOR FINISH NOTES SWE705 LIME GREEN	10 26 01 WALL PROTECTION PANEL	WPP-1	TYPE: WALL PROTECTION SHEETS SERIES: STANDARD TRIP	VC4-1	TYPE: VINYL COMPOSITION TILE PATTERN: ARABESQUE SIZE: 12" X 12" COLOR: JAMES HANDED LIME	12 43 13 ENTRANCE MATS	MAT-1	TYPE: MAT SERIES: ENTRANCE WALK-OUT MAT (TILE)	PL-4	TYPE: PLASTER PHILADELPHIA COMMERCIAL JOHN MATHIAS BARS SIZE: 24" X 24" INSTALLATION: QUARTER TURN	
P-5	TYPE: MAULF FINISH: WHITE	09 90 10.08 SHERWIN WILLIAMS REFER TO SPECIFICATIONS FOR FINISH NOTES SWE706 RED CENT	09 90 10.09 RESIDENT BASE	RB-1	TYPE: RUBBER LANDING TILE MAULF: JONKONT SERIES: 500 DENIM HEIGHT: 4" COLOR: 500 DENIM	VC5-1	TYPE: VINYL COMPOSITION TILE PATTERN: ARABESQUE SIZE: 12" X 12" COLOR: JAMES HANDED LIME	MAT-2	TYPE: MAT SERIES: ENTRANCE WALK-OUT MAT (TILE)	PL-5	TYPE: PLASTER PHILADELPHIA COMMERCIAL JOHN MATHIAS BARS SIZE: 24" X 24" INSTALLATION: QUARTER TURN		
P-6	TYPE: MAULF FINISH: WHITE	09 90 10.10 SHERWIN WILLIAMS REFER TO SPECIFICATIONS FOR FINISH NOTES SWE707 SPORTY BLUE	RB-2	TYPE: RUBBER LANDING TILE MAULF: JONKONT SERIES: 500 DENIM HEIGHT: 4" COLOR: 500 DENIM	VC6-1	TYPE: VINYL COMPOSITION TILE PATTERN: ARABESQUE SIZE: 12" X 12" COLOR: JAMES HANDED LIME	MAT-3	TYPE: MAT SERIES: ENTRANCE WALK-OUT MAT (TILE)	PL-6	TYPE: PLASTER PHILADELPHIA COMMERCIAL JOHN MATHIAS BARS SIZE: 24" X 24" INSTALLATION: QUARTER TURN			
P-7	TYPE: MAULF FINISH: WHITE	09 90 10.11 SHERWIN WILLIAMS REFER TO SPECIFICATIONS FOR FINISH NOTES SWE708 COCOS	RB-3	TYPE: RUBBER LANDING TILE MAULF: JONKONT SERIES: 500 DENIM HEIGHT: 4" COLOR: 500 DENIM	VC7-1	TYPE: VINYL COMPOSITION TILE PATTERN: ARABESQUE SIZE: 12" X 12" COLOR: JAMES HANDED LIME	MAT-4	TYPE: MAT SERIES: ENTRANCE WALK-OUT MAT (TILE)	PL-7	TYPE: PLASTER PHILADELPHIA COMMERCIAL JOHN MATHIAS BARS SIZE: 24" X 24" INSTALLATION: QUARTER TURN			
P-8	TYPE: MAULF FINISH: WHITE	09 90 10.12 SHERWIN WILLIAMS REFER TO SPECIFICATIONS FOR FINISH NOTES SWE709 SOMETHING BLUE	RB-4	TYPE: RUBBER LANDING TILE MAULF: JONKONT SERIES: 500 DENIM HEIGHT: 4" COLOR: 500 DENIM	VC8-1	TYPE: VINYL COMPOSITION TILE PATTERN: ARABESQUE SIZE: 12" X 12" COLOR: JAMES HANDED LIME	MAT-5	TYPE: MAT SERIES: ENTRANCE WALK-OUT MAT (TILE)	PL-8	TYPE: PLASTER PHILADELPHIA COMMERCIAL JOHN MATHIAS BARS SIZE: 24" X 24" INSTALLATION: QUARTER TURN			
P-9	TYPE: MAULF FINISH: WHITE	09 90 10.13 SHERWIN WILLIAMS REFER TO SPECIFICATIONS FOR FINISH NOTES SWE710 RESALE BLUE	RB-5	TYPE: RUBBER LANDING TILE MAULF: JONKONT SERIES: 500 DENIM HEIGHT: 4" COLOR: 500 DENIM	VC9-1	TYPE: VINYL COMPOSITION TILE PATTERN: ARABESQUE SIZE: 12" X 12" COLOR: JAMES HANDED LIME	MAT-6	TYPE: MAT SERIES: ENTRANCE WALK-OUT MAT (TILE)	PL-9	TYPE: PLASTER PHILADELPHIA COMMERCIAL JOHN MATHIAS BARS SIZE: 24" X 24" INSTALLATION: QUARTER TURN			
P-10	TYPE: MAULF FINISH: WHITE	09 90 10.14 SHERWIN WILLIAMS REFER TO SPECIFICATIONS FOR FINISH NOTES SWE711 SHERWIN WILLIAMS REFER TO SPECIFICATIONS FOR FINISH NOTES SWE712 SHERWIN WILLIAMS REFER TO SPECIFICATIONS FOR FINISH NOTES SWE713 SHERWIN WILLIAMS REFER TO SPECIFICATIONS FOR FINISH NOTES SWE714 SHERWIN WILLIAMS REFER TO SPECIFICATIONS FOR FINISH NOTES SWE715 SHERWIN WILLIAMS REFER TO SPECIFICATIONS FOR FINISH NOTES SWE716 SHERWIN WILLIAMS REFER TO SPECIFICATIONS FOR FINISH NOTES SWE717 SHERWIN WILLIAMS REFER TO SPECIFICATIONS FOR FINISH NOTES SWE718 SHERWIN WILLIAMS REFER TO SPECIFICATIONS FOR FINISH NOTES SWE719 SHERWIN WILLIAMS REFER TO SPECIFICATIONS FOR FINISH NOTES SWE720 SHERWIN WILLIAMS REFER TO SPECIFICATIONS FOR FINISH NOTES SWE721 SHERWIN WILLIAMS REFER TO SPECIFICATIONS FOR FINISH NOTES SWE722 SHERWIN WILLIAMS REFER TO SPECIFICATIONS FOR FINISH NOTES SWE723 SHERWIN WILLIAMS REFER TO SPECIFICATIONS FOR FINISH NOTES SWE724 SHERWIN WILLIAMS REFER TO SPECIFICATIONS FOR FINISH NOTES SWE725 SHERWIN WILLIAMS REFER TO SPECIFICATIONS FOR FINISH NOTES SWE726 SHERWIN WILLIAMS REFER TO SPECIFICATIONS FOR FINISH NOTES SWE727 SHERWIN WILLIAMS REFER TO SPECIFICATIONS FOR FINISH NOTES SWE728 SHERWIN WILLIAMS REFER TO SPECIFICATIONS FOR FINISH NOTES SWE729 SHERWIN WILLIAMS REFER TO SPECIFICATIONS FOR FINISH NOTES SWE730 SHERWIN WILLIAMS REFER TO SPECIFICATIONS FOR FINISH NOTES SWE731 SHERWIN WILLIAMS REFER TO SPECIFICATIONS FOR FINISH NOTES SWE732 SHERWIN WILLIAMS REFER TO SPECIFICATIONS FOR FINISH NOTES SWE733 SHERWIN WILLIAMS REFER TO SPECIFICATIONS FOR FINISH NOTES SWE734 SHERWIN WILLIAMS REFER TO SPECIFICATIONS FOR FINISH NOTES SWE735 SHERWIN WILLIAMS REFER TO SPECIFICATIONS FOR FINISH NOTES SWE736 SHERWIN WILLIAMS REFER TO SPECIFICATIONS FOR FINISH NOTES SWE737 SHERWIN WILLIAMS REFER TO SPECIFICATIONS FOR FINISH NOTES SWE738 SHERWIN WILLIAMS REFER TO SPECIFICATIONS FOR FINISH NOTES SWE739 SHERWIN WILLIAMS REFER TO SPECIFICATIONS FOR FINISH NOTES SWE740 SHERWIN WILLIAMS REFER TO SPECIFICATIONS FOR FINISH NOTES SWE741 SHERWIN WILLIAMS REFER TO SPECIFICATIONS FOR FINISH NOTES SWE742 SHERWIN WILLIAMS REFER TO SPECIFICATIONS FOR FINISH NOTES SWE743 SHERWIN WILLIAMS REFER TO SPECIFICATIONS FOR FINISH NOTES SWE744 SHERWIN WILLIAMS REFER TO SPECIFICATIONS FOR FINISH NOTES SWE745 SHERWIN WILLIAMS REFER TO SPECIFICATIONS FOR FINISH NOTES SWE746 SHERWIN WILLIAMS REFER TO SPECIFICATIONS FOR FINISH NOTES SWE747 SHERWIN WILLIAMS REFER TO SPECIFICATIONS FOR FINISH NOTES SWE748 SHERWIN WILLIAMS REFER TO SPECIFICATIONS FOR FINISH NOTES SWE749 SHERWIN WILLIAMS REFER TO SPECIFICATIONS FOR FINISH NOTES SWE750 SHERWIN WILLIAMS REFER TO SPECIFICATIONS FOR FINISH NOTES SWE751 SHERWIN WILLIAMS REFER TO SPECIFICATIONS FOR FINISH NOTES SWE752 SHERWIN WILLIAMS REFER TO SPECIFICATIONS FOR FINISH NOTES SWE753 SHERWIN WILLIAMS REFER TO SPECIFICATIONS FOR FINISH NOTES SWE754 SHERWIN WILLIAMS REFER TO SPECIFICATIONS FOR FINISH NOTES SWE755 SHERWIN WILLIAMS REFER TO SPECIFICATIONS FOR FINISH NOTES SWE756 SHERWIN WILLIAMS REFER TO SPECIFICATIONS FOR FINISH NOTES SWE757 SHERWIN WILLIAMS REFER TO SPECIFICATIONS FOR FINISH NOTES SWE758 SHERWIN WILLIAMS REFER TO SPECIFICATIONS FOR FINISH NOTES SWE759 SHERWIN WILLIAMS REFER TO SPECIFICATIONS FOR FINISH NOTES SWE760 SHERWIN WILLIAMS REFER TO SPECIFICATIONS FOR FINISH NOTES SWE761 SHERWIN WILLIAMS REFER TO SPECIFICATIONS FOR FINISH NOTES SWE762 SHERWIN WILLIAMS REFER TO SPECIFICATIONS FOR FINISH NOTES SWE763 SHERWIN WILLIAMS REFER TO SPECIFICATIONS FOR FINISH NOTES SWE764 SHERWIN WILLIAMS REFER TO SPECIFICATIONS FOR FINISH NOTES SWE765 SHERWIN WILLIAMS REFER TO SPECIFICATIONS FOR FINISH NOTES SWE766 SHERWIN WILLIAMS REFER TO SPECIFICATIONS FOR FINISH NOTES SWE767 SHERWIN WILLIAMS REFER TO SPECIFICATIONS FOR FINISH NOTES SWE768 SHERWIN WILLIAMS REFER TO SPECIFICATIONS FOR FINISH NOTES SWE769 SHERWIN WILLIAMS REFER TO SPECIFICATIONS FOR FINISH NOTES SWE770 SHERWIN WILLIAMS REFER TO SPECIFICATIONS FOR FINISH NOTES SWE771 SHERWIN WILLIAMS REFER TO SPECIFICATIONS FOR FINISH NOTES SWE772 SHERWIN WILLIAMS REFER TO SPECIFICATIONS FOR FINISH NOTES SWE773 SHERWIN WILLIAMS REFER TO SPECIFICATIONS FOR FINISH NOTES SWE774 SHERWIN WILLIAMS REFER TO SPECIFICATIONS FOR FINISH NOTES SWE775 SHERWIN WILLIAMS REFER TO SPECIFICATIONS FOR FINISH NOTES SWE776 SHERWIN WILLIAMS REFER TO SPECIFICATIONS FOR FINISH NOTES SWE777 SHERWIN WILLIAMS REFER TO SPECIFICATIONS FOR FINISH NOTES SWE778 SHERWIN WILLIAMS REFER TO SPECIFICATIONS FOR FINISH NOTES SWE779 SHERWIN WILLIAMS REFER TO SPECIFICATIONS FOR FINISH NOTES SWE780 SHERWIN WILLIAMS REFER TO SPECIFICATIONS FOR FINISH NOTES SWE781 SHERWIN WILLIAMS REFER TO SPECIFICATIONS FOR FINISH NOTES SWE782 SHERWIN WILLIAMS REFER TO SPECIFICATIONS FOR FINISH NOTES SWE783 SHERWIN WILLIAMS REFER TO SPECIFICATIONS FOR FINISH NOTES SWE784 SHERWIN WILLIAMS REFER TO SPECIFICATIONS FOR FINISH NOTES SWE785 SHERWIN WILLIAMS REFER TO SPECIFICATIONS FOR FINISH NOTES SWE786 SHERWIN WILLIAMS REFER TO SPECIFICATIONS FOR FINISH NOTES SWE787 SHERWIN WILLIAMS REFER TO SPECIFICATIONS FOR FINISH NOTES SWE788 SHERWIN WILLIAMS REFER TO SPECIFICATIONS FOR FINISH NOTES SWE789 SHERWIN WILLIAMS REFER TO SPECIFICATIONS FOR FINISH NOTES SWE790 SHERWIN WILLIAMS REFER TO SPECIFICATIONS FOR FINISH NOTES SWE791 SHERWIN WILLIAMS REFER TO SPECIFICATIONS FOR FINISH NOTES SWE792 SHERWIN WILLIAMS REFER TO SPECIFICATIONS FOR FINISH NOTES SWE793 SHERWIN WILLIAMS REFER TO SPECIFICATIONS FOR FINISH NOTES SWE794 SHERWIN WILLIAMS REFER TO SPECIFICATIONS FOR FINISH NOTES SWE795 SHERWIN WILLIAMS REFER TO SPECIFICATIONS FOR FINISH NOTES SWE796 SHERWIN WILLIAMS REFER TO SPECIFICATIONS FOR FINISH NOTES SWE797 SHERWIN WILLIAMS REFER TO SPECIFICATIONS FOR FINISH NOTES SWE798 SHERWIN WILLIAMS REFER TO SPECIFICATIONS FOR FINISH NOTES SWE799 SHERWIN WILLIAMS REFER TO SPECIFICATIONS FOR FINISH NOTES SWE800 SHERWIN WILLIAMS REFER TO SPECIFICATIONS FOR FINISH NOTES SWE801 SHERWIN WILLIAMS REFER TO SPECIFICATIONS FOR FINISH NOTES SWE802 SHERWIN WILLIAMS REFER TO SPECIFICATIONS FOR FINISH NOTES SWE803 SHERWIN WILLIAMS REFER TO SPECIFICATIONS FOR FINISH NOTES SWE804 SHERWIN WILLIAMS REFER TO SPECIFICATIONS FOR FINISH NOTES SWE805 SHERWIN WILLIAMS REFER TO SPECIFICATIONS FOR FINISH NOTES SWE806 SHERWIN WILLIAMS REFER TO SPECIFICATIONS FOR FINISH NOTES SWE807 SHERWIN WILLIAMS REFER TO SPECIFICATIONS FOR FINISH NOTES SWE808 SHERWIN WILLIAMS REFER TO SPECIFICATIONS FOR FINISH NOTES SWE809 SHERWIN WILLIAMS REFER TO SPECIFICATIONS FOR FINISH NOTES SWE810 SHERWIN WILLIAMS REFER TO SPECIFICATIONS FOR FINISH NOTES SWE811 SHERWIN WILLIAMS REFER TO SPECIFICATIONS FOR FINISH NOTES SWE812 SHERWIN WILLIAMS REFER TO SPECIFICATIONS FOR FINISH NOTES SWE813 SHERWIN WILLIAMS REFER TO SPECIFICATIONS FOR FINISH NOTES SWE814 SHERWIN WILLIAMS REFER TO SPECIFICATIONS FOR FINISH NOTES SWE815 SHERWIN WILLIAMS REFER TO SPECIFICATIONS FOR FINISH NOTES SWE816 SHERWIN WILLIAMS REFER TO SPECIFICATIONS FOR FINISH NOTES SWE817 SHERWIN WILLIAMS REFER TO SPECIFICATIONS FOR FINISH NOTES SWE818 SHERWIN WILLIAMS REFER TO SPECIFICATIONS FOR FINISH NOTES SWE819 SHERWIN WILLIAMS REFER TO SPECIFICATIONS FOR FINISH NOTES SWE820 SHERWIN WILLIAMS REFER TO SPECIFICATIONS FOR FINISH NOTES SWE821 SHERWIN WILLIAMS REFER TO SPECIFICATIONS FOR FINISH NOTES SWE822 SHERWIN WILLIAMS REFER TO SPECIFICATIONS FOR FINISH NOTES SWE823 SHERWIN WILLIAMS REFER TO SPECIFICATIONS FOR FINISH NOTES SWE824 SHERWIN WILLIAMS REFER TO SPECIFICATIONS FOR FINISH NOTES SWE825 SHERWIN WILLIAMS REFER TO SPECIFICATIONS FOR FINISH NOTES SWE826 SHERWIN WILLIAMS REFER TO SPECIFICATIONS FOR FINISH NOTES SWE827 SHERWIN WILLIAMS REFER TO SPECIFICATIONS FOR FINISH NOTES SWE828 SHERWIN WILLIAMS REFER TO SPECIFICATIONS FOR FINISH NOTES SWE829 SHERWIN WILLIAMS REFER TO SPECIFICATIONS FOR FINISH NOTES SWE830 SHERWIN WILLIAMS REFER TO SPECIFICATIONS FOR FINISH NOTES SWE831 SHERWIN WILLIAMS REFER TO SPECIFICATIONS FOR FINISH NOTES SWE832 SHERWIN WILLIAMS REFER TO SPECIFICATIONS FOR FINISH NOTES SWE833 SHERWIN WILLIAMS REFER TO SPECIFICATIONS FOR FINISH NOTES SWE834 SHERWIN WILLIAMS REFER TO SPECIFICATIONS FOR FINISH NOTES SWE835 SHERWIN WILLIAMS REFER TO SPECIFICATIONS FOR FINISH NOTES SWE836 SHERWIN WILLIAMS REFER TO SPECIFICATIONS FOR FINISH NOTES SWE837 SHERWIN WILLIAMS REFER TO SPECIFICATIONS FOR FINISH NOTES SWE838 SHERWIN WILLIAMS REFER TO SPECIFICATIONS FOR FINISH NOTES SWE839 SHERWIN WILLIAMS REFER TO SPECIFICATIONS FOR FINISH NOTES SWE840 SHERWIN WILLIAMS REFER TO SPECIFICATIONS FOR FINISH NOTES SWE841 SHERWIN WILLIAMS REFER TO SPECIFICATIONS FOR FINISH NOTES SWE842 SHERWIN WILLIAMS REFER TO SPECIFICATIONS FOR FINISH NOTES SWE843 SHERWIN WILLIAMS REFER TO SPECIFICATIONS FOR FINISH NOTES SWE844 SHERWIN WILLIAMS REFER TO SPECIFICATIONS FOR FINISH NOTES SWE845 SHERWIN WILLIAMS REFER TO SPECIFICATIONS FOR FINISH NOTES SWE846 SHERWIN WILLIAMS REFER TO SPECIFICATIONS FOR FINISH NOTES SWE847 SHERWIN WILLIAMS REFER TO SPECIFICATIONS FOR FINISH NOTES SWE848 SHERWIN WILLIAMS REFER TO SPECIFICATIONS FOR FINISH NOTES SWE849 SHERWIN WILLIAMS REFER TO SPECIFICATIONS FOR FINISH NOTES SWE850 SHERWIN WILLIAMS REFER TO SPECIFICATIONS FOR FINISH NOTES SWE851 SHERWIN WILLIAMS REFER TO SPECIFICATIONS FOR FINISH NOTES SWE852 SHERWIN WILLIAMS REFER TO SPECIFICATIONS FOR FINISH NOTES SWE853 SHERWIN WILLIAMS REFER TO SPECIFICATIONS FOR FINISH NOTES SWE854 SHERWIN WILLIAMS REFER TO SPECIFICATIONS FOR FINISH NOTES SWE855 SHERWIN WILLIAMS REFER TO SPECIFICATIONS FOR FINISH NOTES SWE856 SHERWIN WILLIAMS REFER TO SPECIFICATIONS FOR FINISH NOTES SWE857 SHERWIN WILLIAMS REFER TO SPECIFICATIONS FOR FINISH NOTES SWE858 SHERWIN WILLIAMS REFER TO SPECIFICATIONS FOR FINISH NOTES SWE859 SHERWIN WILLIAMS REFER TO SPECIFICATIONS FOR FINISH NOTES SWE860 SHERWIN WILLIAMS REFER TO SPECIFICATIONS FOR FINISH NOTES SWE861 SHERWIN WILLIAMS REFER TO SPECIFICATIONS FOR FINISH NOTES SWE862 SHERWIN WILLIAMS REFER TO SPECIFICATIONS FOR FINISH NOTES SWE863 SHERWIN WILLIAMS REFER TO SPECIFICATIONS FOR FINISH NOTES SWE864 SHERWIN WILLIAMS REFER TO SPECIFICATIONS FOR FINISH NOTES SWE865 SHERWIN WILLIAMS REFER TO SPECIFICATIONS FOR FINISH NOTES SWE866 SHERWIN WILLIAMS REFER TO SPECIFICATIONS FOR FINISH NOTES SWE867 SHERWIN WILLIAMS REFER TO SPECIFICATIONS FOR FINISH NOTES SWE868 SHERWIN WILLIAMS REFER TO SPECIFICATIONS FOR FINISH NOTES SWE869 SHERWIN WILLIAMS REFER TO SPECIFICATIONS FOR FINISH NOTES SWE870 SHERWIN WILLIAMS REFER TO SPECIFICATIONS FOR FINISH NOTES SWE871 SHERWIN WILLIAMS REFER TO SPECIFICATIONS FOR FINISH NOTES SWE872 SHERWIN WILLIAMS REFER TO SPECIFICATIONS FOR FINISH NOTES SWE873 SHERWIN WILLIAMS REFER TO SPECIFICATIONS FOR FINISH NOTES SWE874 SHERWIN WILLIAMS REFER TO SPECIFICATIONS FOR FINISH NOTES SWE875 SHERWIN WILLIAMS REFER TO SPECIFICATIONS FOR FINISH NOTES SWE876 SHERWIN WILLIAMS REFER TO SPECIFICATIONS FOR FINISH NOTES SWE877 SHERWIN WILLIAMS REFER TO SPECIFICATIONS FOR FINISH NOTES SWE878 SHERWIN WILLIAMS REFER TO SPECIFICATIONS FOR FINISH NOTES SWE879 SHERWIN WILLIAMS REFER TO SPECIFICATIONS FOR FINISH NOTES SWE880 SHERWIN WILLIAMS REFER TO SPECIFICATIONS FOR FINISH NOTES SWE881 SHERWIN WILLIAMS REFER TO SPECIFICATIONS FOR FINISH NOTES SWE882 SHERWIN WILLIAMS REFER TO SPECIFICATIONS FOR FINISH NOTES SWE883 SHERWIN WILLIAMS REFER TO SPECIFICATIONS FOR FINISH NOTES SWE884 SHERWIN WILLIAMS REFER TO SPECIFICATIONS FOR FINISH NOTES SWE885 SHERWIN WILLIAMS REFER TO SPECIFICATIONS FOR FINISH NOTES SWE886 SHERWIN WILLIAMS REFER TO SPECIFICATIONS FOR FINISH NOTES SWE887 SHERWIN WILLIAMS REFER TO SPECIFICATIONS FOR FINISH NOTES SWE888 SHERWIN WILLIAMS REFER TO SPECIFICATIONS FOR FINISH NOTES SWE889 SHERWIN WILLIAMS REFER TO SPECIFICATIONS FOR FINISH NOTES SWE890 SHERWIN WILLIAMS REFER TO SPECIFICATIONS FOR FINISH NOTES SWE891 SHERWIN WILLIAMS REFER TO SPECIFICATIONS FOR FINISH NOTES SWE892 SHERWIN WILLIAMS REFER TO SPECIFICATIONS FOR FINISH NOTES SWE893 SHERWIN WILLIAMS REFER TO SPECIFICATIONS FOR FINISH NOTES SWE894 SHERWIN WILLIAMS REFER TO SPECIFICATIONS FOR FINISH NOTES SWE895 SHERWIN WILLIAMS REFER TO SPECIFICATIONS FOR FINISH NOTES SWE896 SHERWIN WILLIAMS REFER TO SPECIFICATIONS FOR FINISH NOTES SWE897 SHERWIN WILLIAMS REFER TO SPECIFICATIONS FOR FINISH NOTES SWE898 SHERWIN WILLIAMS REFER TO SPECIFICATIONS FOR FINISH NOTES SWE899 SHERWIN WILLIAMS REFER TO SPECIFICATIONS FOR FINISH NOTES SWE900 SHERWIN WILLIAMS REFER TO SPECIFICATIONS FOR FINISH NOTES SWE901 SHERWIN WILLIAMS REFER TO SPECIFICATIONS FOR FINISH NOTES SWE902 SHERWIN WILLIAMS REFER TO SPECIFICATIONS FOR FINISH NOTES SWE903 SHERWIN WILLIAMS REFER TO SPECIFICATIONS FOR FINISH NOTES SWE904 SHERWIN WILLIAMS REFER TO SPECIFICATIONS FOR FINISH NOTES SWE905 SHERWIN WILLIAMS REFER TO SPECIFICATIONS FOR FINISH NOTES SWE906 SHERWIN WILLIAMS REFER TO SPECIFICATIONS FOR FINISH NOTES SWE907 SHERWIN WILLIAMS REFER TO SPECIFICATIONS FOR FINISH NOTES SWE908 SHERWIN WILLIAMS REFER TO SPECIFICATIONS FOR FINISH NOTES SWE909 SHERWIN WILLIAMS REFER TO SPECIFICATIONS FOR FINISH NOTES SWE910 SHERWIN WILLIAMS REFER TO SPECIFICATIONS FOR FINISH NOTES SWE911 SHERWIN WILLIAMS REFER TO SPECIFICATIONS FOR FINISH NOTES SWE912 SHERWIN WILLIAMS REFER TO SPECIFICATIONS FOR FINISH NOTES SWE913 SHERWIN WILLIAMS REFER TO SPECIFICATIONS FOR FINISH NOTES SWE914 SHERWIN WILLIAMS REFER TO SPECIFICATIONS FOR FINISH NOTES SWE915 SHERWIN WILLIAMS REFER TO SPECIFICATIONS FOR FINISH NOTES SWE916 SHERWIN WILLIAMS REFER TO SPECIFICATIONS FOR FINISH NOTES SWE917 SHERWIN WILLIAMS REFER TO SPECIFICATIONS FOR FINISH NOTES SWE918 SHERWIN WILLIAMS REFER TO SPECIFICATIONS FOR FINISH NOTES SWE919 SHERWIN WILLIAMS REFER TO SPECIFICATIONS FOR FINISH NOTES SWE920 SHERWIN WILLIAMS REFER TO SPECIFICATIONS FOR FINISH NOTES SWE921 SHERWIN WILLIAMS REFER TO SPECIFICATIONS FOR FINISH NOTES SWE922 SHERWIN WILLIAMS REFER TO SPECIFICATIONS FOR FINISH NOTES SWE923 SHERWIN WILLIAMS REFER TO SPECIFICATIONS FOR FINISH NOTES SWE924 SHERWIN WILLIAMS REFER TO SPECIFICATIONS FOR FINISH NOTES SWE925 SHERWIN WILLIAMS REFER TO SPECIFICATIONS FOR FINISH NOTES SWE926 SHERWIN WILLIAMS REFER TO SPECIFICATIONS FOR FINISH NOTES SWE927 SHERWIN WILLIAMS REFER TO SPECIFICATIONS FOR FINISH NOTES SWE928 SHERWIN WILLIAMS REFER TO SPECIFICATIONS FOR FINISH NOTES SWE929 SHERWIN WILLIAMS REFER TO SPECIFICATIONS FOR FINISH NOTES SWE930 SHERWIN WILLIAMS REFER TO SPECIFICATIONS FOR FINISH NOTES SWE931 SHERWIN WILLIAMS REFER TO SPECIFICATIONS FOR FINISH NOTES SWE932 SHERWIN WILLIAMS REFER TO SPECIFICATIONS FOR FINISH NOTES SWE933 SHERWIN WILLIAMS REFER TO SPECIFICATIONS FOR FINISH NOTES SWE934 SHERWIN WILLIAMS REFER TO SPECIFICATIONS FOR FINISH NOTES SWE935 SHERWIN WILLIAMS REFER TO SPECIFICATIONS FOR FINISH NOTES SWE936 SHERWIN WILLIAMS REFER TO SPECIFICATIONS FOR FINISH NOTES SWE937 SHERWIN WILLIAMS REFER TO SPECIFICATIONS FOR FINISH NOTES SWE938 SHERWIN WILLIAMS REFER TO SPECIFICATIONS FOR FINISH NOTES SWE939 SHERWIN WILLIAMS REFER TO SPECIFICATIONS FOR FINISH NOTES SWE940 SHERWIN WILLIAMS REFER TO SPECIFICATIONS FOR FINISH NOTES SWE941 SHERWIN WILLIAMS REFER TO SPECIFICATIONS FOR FINISH NOTES SWE942 SHERWIN WILLIAMS REFER TO SPECIFICATIONS FOR FINISH NOTES SWE943 SHERWIN WILLIAMS REFER TO SPECIFICATIONS FOR FINISH NOTES SWE944 SHERWIN WILLIAMS REFER TO SPECIFICATIONS FOR FINISH NOTES SWE945 SHERWIN WILLIAMS REFER TO SPECIFICATIONS FOR FINISH NOTES SWE946 SHERWIN WILLIAMS REFER TO SPECIFICATIONS FOR FINISH NOTES SWE947 SHERWIN WILLIAMS REFER TO SPECIFICATIONS FOR FINISH NOTES SWE948 SHERWIN WILLIAMS REFER TO SPECIFICATIONS FOR FINISH NOTES SWE949 SHERWIN WILLIAMS REFER TO SPECIFICATIONS FOR FINISH NOTES SWE950 SHERWIN WILLIAMS REFER TO SPECIFICATIONS FOR FINISH NOTES SWE951 SHERWIN WILLIAMS REFER TO SPECIFICATIONS FOR FINISH NOTES SWE952 SHERWIN WILLIAMS REFER TO SPECIFICATIONS FOR FINISH NOTES SWE953 SHERWIN WILLIAMS REFER TO SPECIFICATIONS FOR FINISH NOTES SWE954 SHERWIN WILLIAMS REFER TO SPECIFICATIONS FOR FINISH NOTES SWE955 SHERWIN WILLIAMS REFER TO SPECIFICATIONS FOR FINISH NOTES SWE956 SHERWIN WILLIAMS REFER TO SPECIFICATIONS FOR FINISH NOTES SWE957 SHERWIN WILLIAMS REFER TO SPECIFICATIONS FOR FINISH NOTES SWE958 SHERWIN WILLIAMS REFER TO SPECIFICATIONS FOR FINISH NOTES SWE959 SHERWIN WILLIAMS REFER TO SPECIFICATIONS FOR FINISH NOTES SWE960 SHERWIN WILLIAMS REFER TO SPECIFICATIONS FOR FINISH NOTES SWE961 SHERWIN WILLIAMS REFER TO SPECIFICATIONS FOR FINISH NOTES SWE962 SHERWIN WILLIAMS REFER TO SPECIFICATIONS FOR FINISH NOTES SWE963 SHERWIN WILLIAMS REFER TO SPECIFICATIONS FOR FINISH NOTES SWE964 SHERWIN WILLIAMS REFER TO SPECIFICATIONS FOR FINISH NOTES SWE965 SHERWIN WILLIAMS REFER TO SPECIFICATIONS FOR FINISH NOTES SWE966 SHERWIN WILLIAMS REFER TO SPECIFICATIONS FOR FINISH NOTES SWE967 SHERWIN WILLIAMS REFER TO SPECIFICATIONS FOR FINISH NOTES SWE968 SHERWIN WILLIAMS REFER TO SPECIFICATIONS FOR FINISH NOTES SWE969 SHERWIN WILLIAMS REFER TO SPECIFICATIONS FOR FINISH NOTES SWE970 SHERWIN WILLIAMS REFER TO SPECIFICATIONS FOR FINISH NOTES SWE971 SHERWIN WILLIAMS REFER TO SPECIFICATIONS FOR FINISH NOTES SWE972 SHERWIN WILLIAMS REFER TO SPECIFICATIONS FOR FINISH NOTES SWE973 SHERWIN WILLIAMS REFER TO SPECIFICATIONS FOR FINISH NOTES SWE974 SHERWIN WILLIAMS REFER TO SPECIFICATIONS FOR FINISH NOTES SWE975 SHERWIN WILLIAMS REFER TO SPECIFICATIONS FOR FINISH NOTES SWE976 SHERWIN WILLIAMS REFER TO SPECIFICATIONS FOR FINISH NOTES SWE977 SHERWIN WILLIAMS REFER TO SPECIFICATIONS FOR FINISH NOTES SWE978 SHERWIN WILLIAMS REFER TO SPECIFICATIONS FOR FINISH NOTES SWE979 SHERWIN WILLIAMS REFER TO SPECIFICATIONS FOR FINISH NOTES SWE980 SHERWIN WILLIAMS REFER TO SPECIFICATIONS FOR FINISH NOTES SWE981 SHERWIN WILLIAMS REFER TO SPECIFICATIONS FOR FINISH NOTES SWE982 SHERWIN WILLIAMS REFER TO SPECIFICATIONS FOR FINISH NOTES SWE983 SHERWIN WILLIAMS REFER TO SPECIFICATIONS FOR FINISH NOTES SWE984 SHERWIN WILLIAMS REFER TO SPECIFICATIONS FOR FINISH NOTES SWE985 SHERWIN WILLIAMS REFER TO SPECIFICATIONS FOR FINISH NOTES SWE986 SHERWIN WILLIAMS REFER TO SPECIFICATIONS FOR FINISH NOTES SWE987 SHERWIN WILLIAMS REFER TO SPECIFICATIONS FOR FINISH NOTES SWE988 SHERWIN WILLIAMS REFER TO SPECIFICATIONS FOR FINISH NOTES SWE989 SHERWIN WILLIAMS REFER TO SPECIFICATIONS FOR FINISH NOTES SWE990 SHERWIN WILLIAMS REFER TO SPECIFICATIONS FOR FINISH NOTES SWE991 SHERWIN WILLIAMS REFER TO SPECIFICATIONS FOR FINISH NOTES SWE992 SHERWIN WILLIAMS REFER TO SPECIFICATIONS FOR FINISH NOTES SWE993 SHERWIN WILLIAMS REFER TO SPECIFICATIONS FOR FINISH NOTES SWE994 SHERWIN WILLIAMS REFER TO SPECIFICATIONS FOR FINISH NOTES SWE995 SHERWIN WILLIAMS REFER TO SPECIFICATIONS FOR FINISH NOTES SWE996 SHERWIN WILLIAMS REFER TO SPECIFICATIONS FOR FINISH NOTES SWE997 SHERWIN WILLIAMS REFER TO SPECIFICATIONS FOR FINISH NOTES SWE998 SHERWIN WILLIAMS REFER TO SPECIFICATIONS FOR FINISH NOTES SWE999 SHERWIN WILLIAMS REFER TO SPECIFICATIONS FOR FINISH NOTES SWE1000 SHERWIN WILLIAMS REFER TO SPECIFICATIONS FOR FINISH NOTES											

41 00 13 36 00 PLASTIC LAMINATE	
TYPE: PLASTIC LAMINATE	
MANUF: ABBOTT	
COLOR: W-454 NATURAL CROSSFIRE PEAR	
EDGE: EB-1	
TYPE: PLASTIC LAMINATE	
MANUF: ABBOTT	
COLOR: P-250 TATAM WASAG	
EDGE: EB-1	
TYPE: PLASTIC LAMINATE	
MANUF: ABBOTT	
COLOR: P-250 TATAM SENORI	
EDGE: EB-1	
TYPE: PLASTIC LAMINATE	
MANUF: POINTS	
COLOR: ABBY BRIDE OF THE SEA	
EDGE: EB-1	
TYPE: PLASTIC LAMINATE	
MANUF: POINTS	
COLOR: SUMMER HEAT RIVER	
EDGE: EB-1	
TYPE: PLASTIC LAMINATE	
MANUF: WILSON	
COLOR: 4745 MAROONCHY BRUSH	
EDGE: EB-1	
TYPE: PLASTIC LAMINATE	
MANUF: WILSON	
COLOR: ABBOTT BIERER MESH	
EDGE: EB-1	
EDGEBOARD	
TYPE: EDGEBOARD	
MANUF: CHARTER INDUSTRIES	
COLOR: WHITE - LUGAR MATCH	
NOTES: 3MM	
DUSTY WALL PANEL FABRIC	
TYPE: PANEL FABRIC	
MANUF: MATTEI FABRICS	
PATTERN: INTRELIDE	
COLOR: SILVER SPACE	
TYPE: PANEL FABRIC	
MANUF: MATTEI FABRICS	
COLOR: INTRELIDE	
EDGE: 101-004 02MM	

GENERAL NOTES:	
1. REFER TO FINISH SCHEDULE FOR MORE INFORMATION, REFER TO 2D DRAWINGS FOR FLOOR PATTERNS AND ADJACENT WALL LOCATIONS.	
2. HADDOOR FRAMES AND WINDOW FRAMES ARE TO BE PTD P-10.	
3. ALL FINISH FLOORING SHALL EXTEND BENEATH CASEWORK, MILLWORK, AND PLUMBING FIXTURES UNTO	
4. USE APPROPRIATE TRANSITION STRIPS AT TRANSITION STRIPS REQUIRED AT BETWEEN RESILIENT FLOORINGS. SCHEDULE TRANSITION STRIPS ARE TO BE USED BETWEEN PARQUETLAN TILE AND OTHER FLOORING MATERIALS.	
5. WINDOW SILLS ARE TO BE PLAM-5.	
6. ALL OVER COULINGS AND COFFITS SHALL BE PAINTED WITH AN ACRYLIC PAINT, REFER TO REF L00105 FOR WALL FINISH LOCATIONS.	
7. WIP IS TO BE USED ABOVE RIS ON WALLS AROUND MOP SINK BASINS.	
8. ALL EXPOSED STRUCTURAL STEEL COMPONENTS ARE TO BE PAINTED P-14.	
9. REFLECTOR TO BE USED VOT 47 FOR FLOORING AND PLAM-5 WALL FINISH.	

MISCELLANEOUS	
TBD	TO BE DETERMINED
PTM	PAINT TO MATCH / PAINT TO MATCH
ETR	EXISTING TO REMAIN

GENERAL NOTES

1. ALL HEIGHTS GIVEN ARE ABOVE FIN FLOOR.
2. AREAS LABELED "TO BE EXPOSED" ARE TO BE EXPOSED STRUCTURE AND EQUIPMENT. ALL EXPOSED STRUCTURE, EQUIPMENT, DUCTS, PIPES, CONDUIT, ETC. ARE TO BE PAINTED AS SHOWN.
3. VERIFY ALL MECHANICAL AND ELECTRICAL EQUIPMENT WITH MEP ENGINEER.
4. ALL RESTROOMS TO HAVE MISTURER RESISTANT ACT.
5. LIGHT FIXTURES, SPRINKLER HEADS AND OTHER CEILING HANGING FIXTURES SHOULD BE COORDINATED WITH THE GENERAL CONTRACTOR AS SHOWN ON THE RCP. FIELD COORDINATION WILL BE REQUIRED TO ENSURE THIS CRITERIA IS MET.

LAVALLEE/BRENSINGER ARCHITECTS

155 Dow Street, Suite 400, Manchester, NH 03101
45 Cambridge Street, Charlestown, MA 02129
NH: 603.622.5400 MA: 617.389.2320 WWW.LBPA.COM

Rochester School Department

East Rochester
Elementary School

773 Portland Street
Rochester, NH 03608

NO.	DESCRIPTION	DATE



CONTENT:
PHASE 1 - LEVEL ONE REFLECTED CEILING PLAN

DESIGNED BY:	CBS
PROJECT NO:	19-020-00
DATE:	06-01-2014
REVISED:	XX
SCALE:	As Indicated

A1.4-P1

CONSTRUCTION DOCUMENTS

Copyright © 2014 by Lavallee/Brensinger Architects, Inc. All rights reserved. No reproduction or transmission without permission.



- EXP. CONST. CLG. W / WATERBORNE ACRYLIC DRYFALL 1,962 SF
- DW CLG. PTD. FLAT 535 SF
- 3' DW SOFFIT FACE 924 SF
- 1' DW SOFFIT FACE 34 SF

61 ACT/ GWS SOFFIT at WALL with L MOLDING
1'-0" x 1'-0"

11 ACOUSTIC CEILING AT MUSIC ROOM
1'-0" x 1'-0"

J1 PHASE 1 - LEVEL ONE REFLECTED CEILING PLAN
1/8" = 1'-0"

1 2 3 4 5 6 7 8 9 10 11 12 13 14

J

- GENERAL NOTES**
1. ALL HEIGHTS GIVEN ARE ABOVE FIN FLOOR
 2. AREAS LABELED "EXPOSED" ARE TO BE EXPOSED STRUCTURE AND EQUIPMENT. ALL EXPOSED STRUCTURE, EQUIPMENT, DUCTS, PIPES, CONDUIT, ETC. ARE TO BE PAINTED FLAT.
 3. VERIFY ALL MECHANICAL AND ELECTRICAL EQUIPMENT WITH MEP ENGINEER.
 4. ALL RESTROOMS TO HAVE MOISTURE RESISTANT ACT.
 5. LIGHT FIXTURES, SPRINKLER HEADS AND OTHER UTILITIES HANGING PENETRATIONS SHOULD BE COORDINATED BY THE CONTRACTOR WITH THE CEILING AS SHOWN ON THE RCP. FIELD COORDINATION WILL BE REQUIRED TO ENSURE THIS CRITERIA IS MET.

LAVALLÉE/BRENSINGER ARCHITECTS

155 Dow Street, Suite 400, Manchester, NH 03101
45 Cambridge Street, Charlestown, MA 02129
NH: 603.622.5400 MA: 617.269.2300 www.LBPA.com

Rochester School Department

East Rochester
Elementary School

773 Portland Street
Rochester, NH 03608

NO.	DESCRIPTION	DATE



CONTENTS
PHASE 1 - LEVEL TWO REFLECTED CEILING PLAN

DESIGNED BY:	CBS
PROJECT NO:	13-023-00
DATE:	04-01-2014
REVISED:	XX
SCALE:	As Indicated

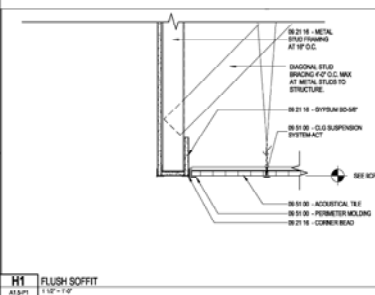
A1.5-P1

Project Name
CONSTRUCTION DOCUMENTS

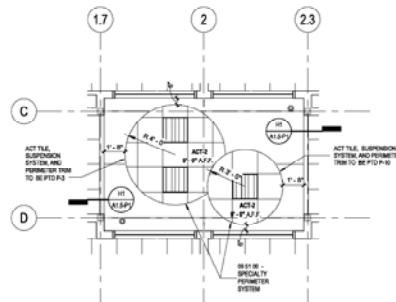
Copyright © 2014 by L.A.V.A.L.L.E.E./B.R.E.N.S.I.N.G.E.R. All rights reserved. No reproduction without permission.



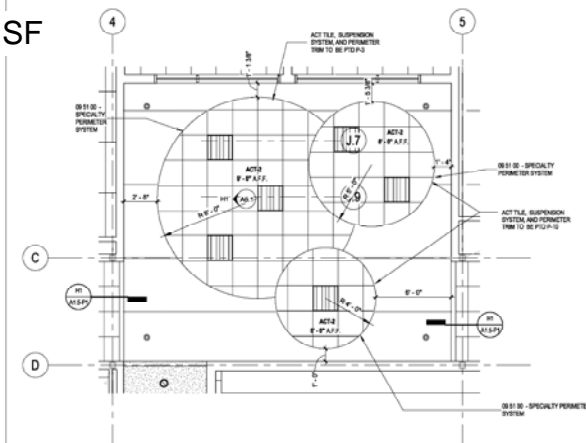
- EXP. CONST. CLG. W / WATERBORNE ACRYLIC DRYFALL 1,920 SF
- DW CLG. PTD. FLAT 367 SF
- 3' DW SOFFIT FACE 900 SF
- 1' DW SOFFIT FACE 20 SF
- WD. TRIM PTD. 193 LF
- ACOUSTICAL GRID & TILE PAINTED 442 SF



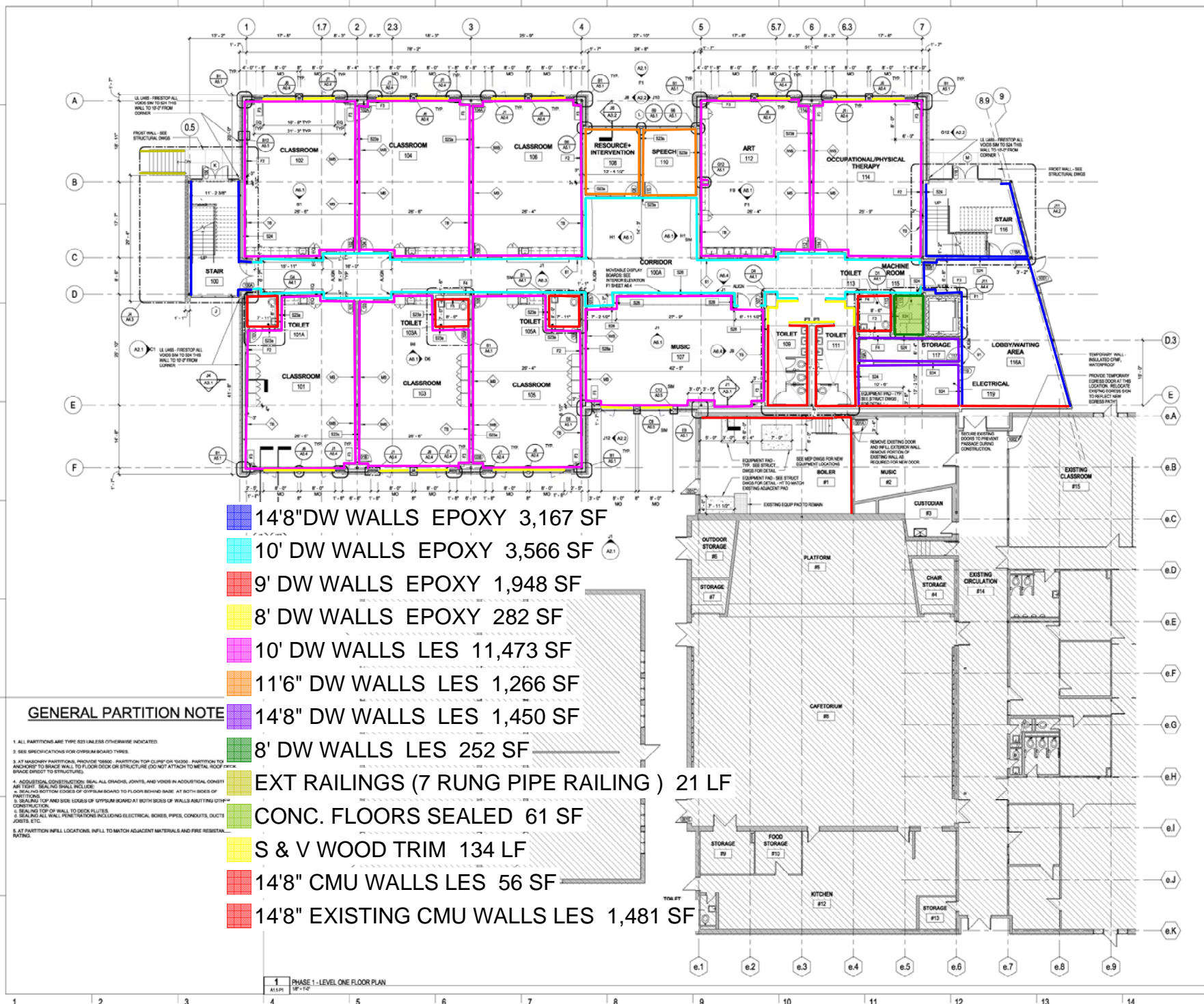
J1 PHASE 1 - LEVEL TWO REFLECTED CEILING PLAN



J6 CORRIDOR CEILING CLOUDS - EAST



J10 CORRIDOR CEILING - CENTER



**East Rochester
Elementary School**

773 Portland Street
Rochester, NH 03868

[illegible]

CONTENT:

PHASE 1: LEVEL ONE FLOOR PLAN

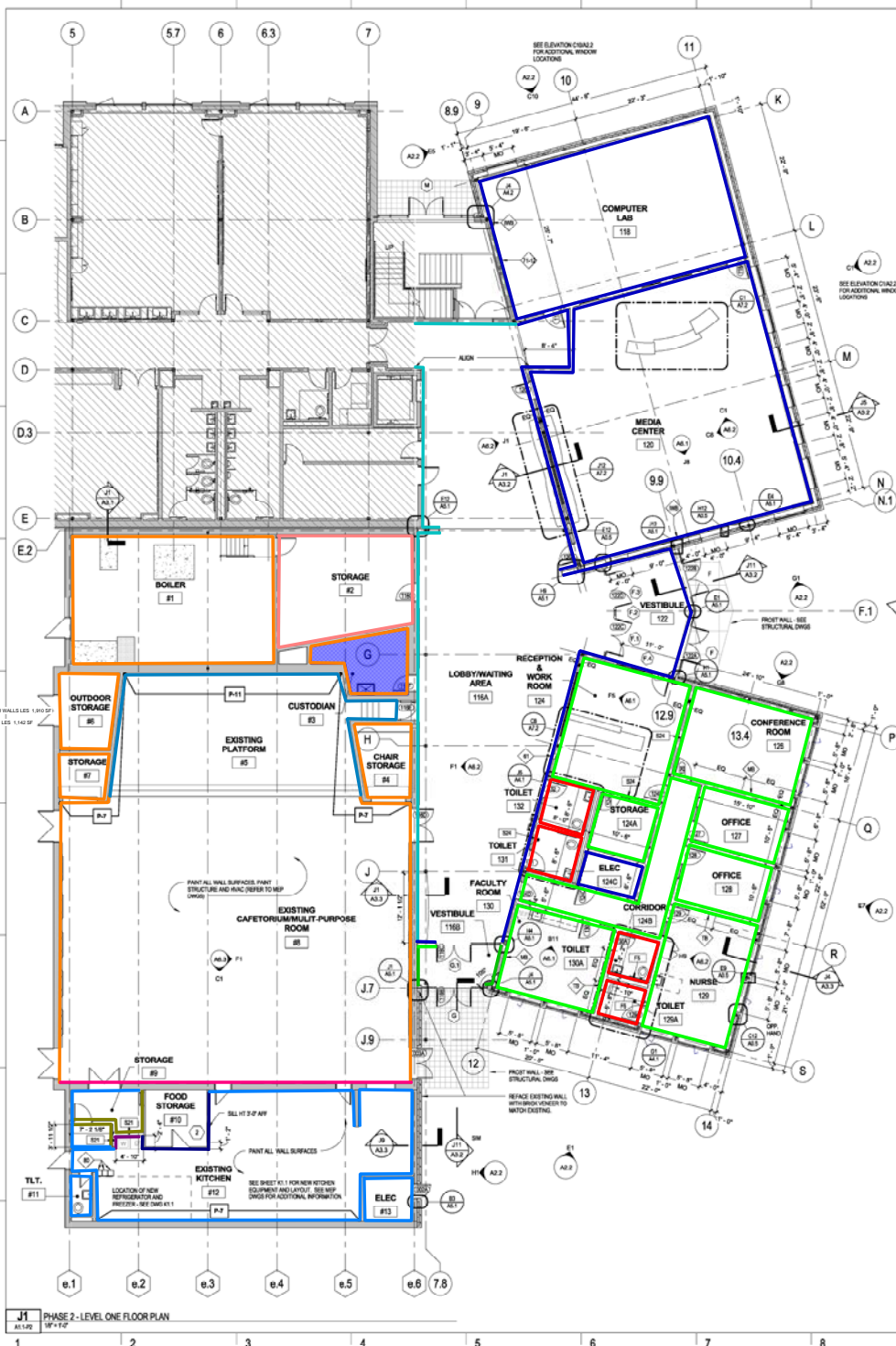
CHARM ETC.	
PROJECT NO.	13-0
DATE	04-21
REVISED	
SCALE	As Shown

A1.1-P1

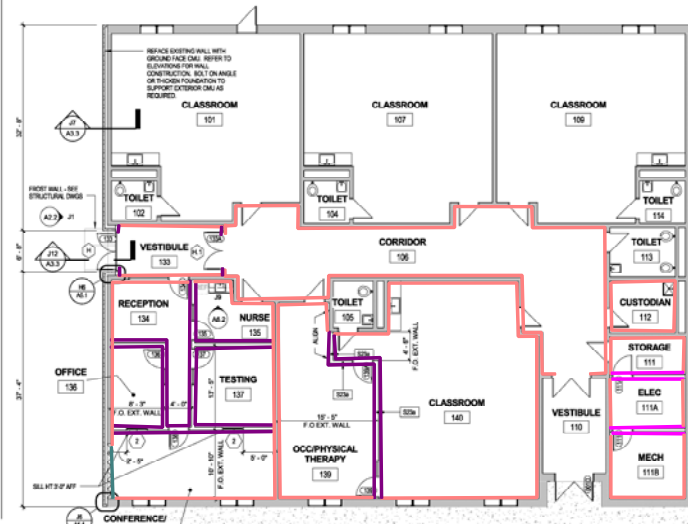
Project Phase

CONSTRUCTION DOCUMENT

Copyright © 2014 by Lippincott Williams & Wilkins
All rights reserved.



- 8'8" EXISTING WALLS EPOXY 207 SF**
- 8'8" DW WALLS EPOXY 56 SF**
- 8'8" DW WALLS LES 277 SF**
- 8'8" EXISTING DW WALLS LES 59 SF**
- 18'8" EXISTING CMU WALLS LES 7,476 SF**
- 16'7" EXISTING CMU WALLS LES 1,614 SF**
- 10' EXISTING CMU WALLS LES 6,620 SF**
- 17'7" DW WALLS LES 9,017 SF**
- 17'7" EXISTING GLAZED CMU WALLS LES 2,194 SF**
- 9' EXISTING CMU WALLS LES 131 SF**
- 9' DW WALLS LES 4,823 SF**
- 9' DW WALLS EPOXY 1,044 SF**
- 10' DW WALLS LES 460 SF**
- 10' DW WALLS LES 2,341 SF**
- 10' DW WALLS LES 81 SF**
- CONCRETE FLOORS EPOXY 131 SF**



NO.	DESCRIPTION	DATE

CONTENTS
PHASE 2 - LEVEL ONE FLOOR PLAN

OWNER:	CSB
PROJECT NO:	10-020-00
DATE:	04-01-2014
REVISED:	05
SCALE:	As Indicated

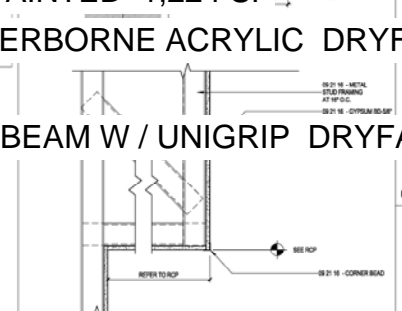
A1.1-P2

CONSTRUCTION DOCUMENTS

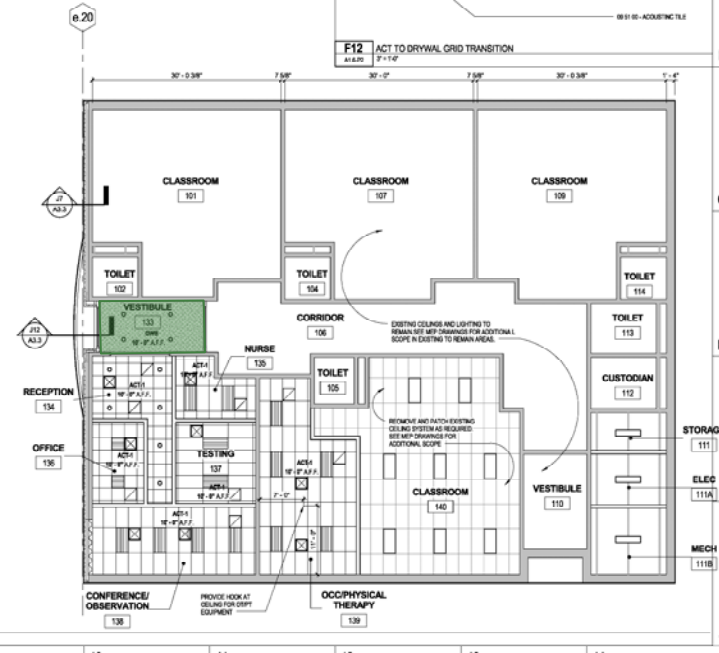
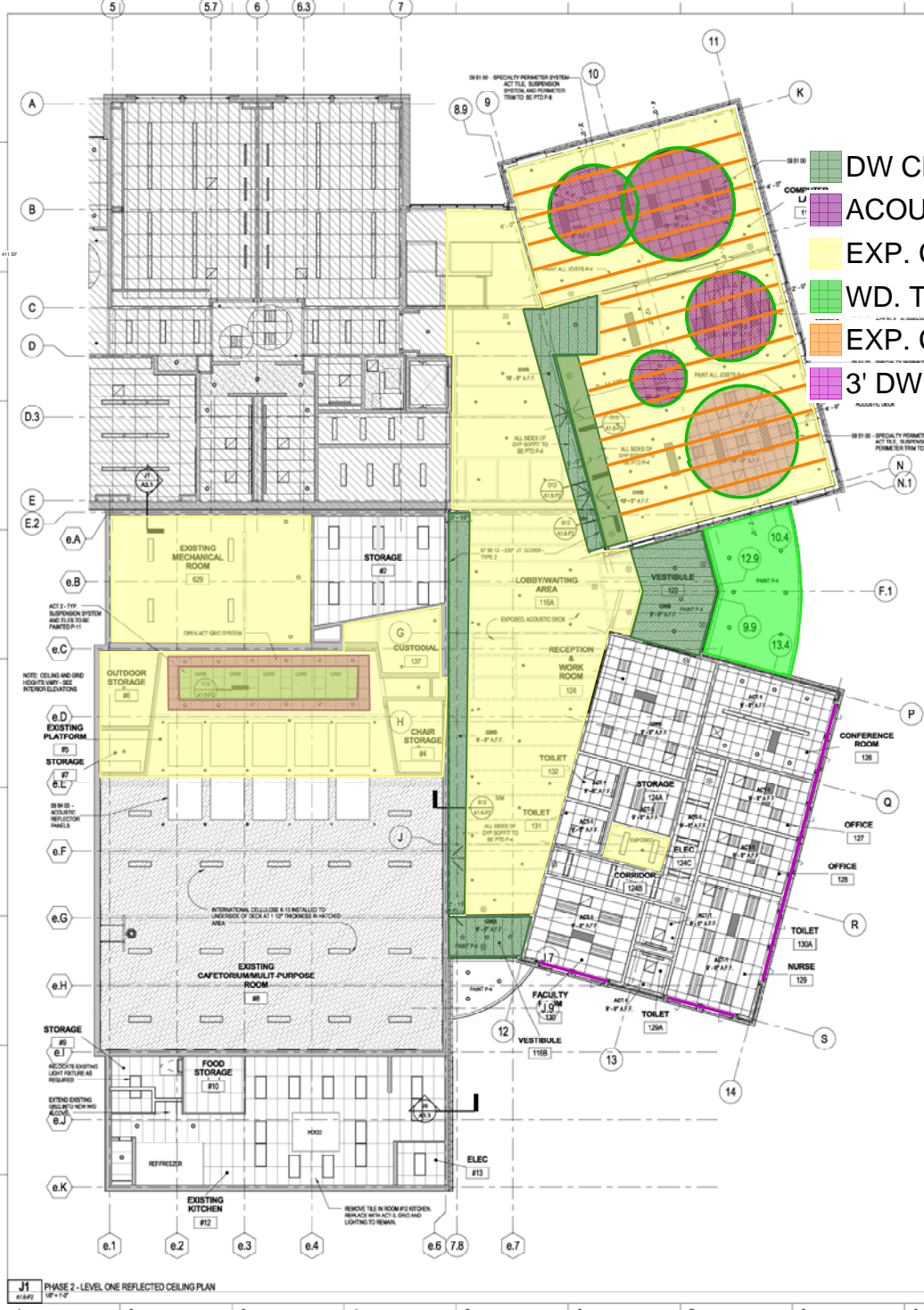
COPYRIGHT © 2014 BY LAVALLEE/BRENSINGER ARCHITECTS
REPRODUCTION OR TRANSMISSION IN ANY FORM OR BY ANY MEANS
WITHOUT PERMISSION IS PROHIBITED

GENERAL NOTES

1. ALL HEIGHTS GIVEN ARE ABOVE FINISH FLOOR.
2. AREAS LABELED "REMOVE" ARE TO BE EXPOSED STRUCTURE AND EQUIPMENT. ALL EXPOSED STRUCTURE, EQUIPMENT, DUCTS, PIPES, CONDUIT, ETC. ARE TO BE PAINTED IN U.S. RED.
3. REMOVE ALL MECHANICAL AND ELECTRICAL EQUIPMENT WITH NEW DUCTS.
4. ALL MECHANICAL AND ELECTRICAL EQUIPMENT TO HAVE WORKING CLEARANCE (SEE ACT).
5. LIGHT FIXTURES, SPRINKLER HEADS AND OTHER UTILITIES AND CEILING PENETRATIONS SHOULD BE



- DW CLG. PTD. FLAT 1,262 SF
- ACOUSTICAL GRID & TILE PAINTED 1,224 SF
- EXP. CONST. CLG. W / WATERBORNE ACRYLIC DRYFALL 7,516 SF
- WD. TRIM PTD. 257 LF
- EXP. CONST. CLG. JOIST & BEAM W / UNIGRIP DRYFALL 537 LF
- 3' DW SOFFIT FACE 227 SF



Rochester School Department

East Rochester Elementary School

773 Portland Street
Rochester, NH 03608

NO.	DESCRIPTION	DATE

CONT: PHASE 2 - LEVEL ONE REFLECTED CEILING PLAN

DESIGNED BY:	CSB
PROJECT NO:	19-023-00
DATE:	04-01-2014
REVISED:	XX
SCALE:	As Indicated

A1.6-P2

Project Name
CONSTRUCTION DOCUMENTS
COPYRIGHT © 2014 BY L.A. VALLEE/BRENSINGER ARCHITECTS
REPRODUCTION OR ALTERATION WITHOUT PERMISSION IS PROHIBITED

RAILINGS (PICKET RAILING) 45 LF

RAILINGS (1 RUNG PIPE RAILING) 28 LF

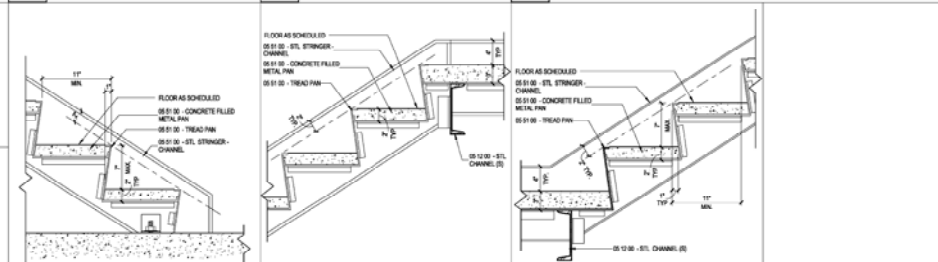
INTERIOR STAIR FLIGHTS 3 EA



C1 STAIR SECTION DETAIL @ GUARDRAIL & HANDRAIL
A4.2 1/12" = 1'-0"

C3 STAIR SECTION DETAIL @ GUARDRAIL (TUBE)
A4.2 1/12" = 1'-0"

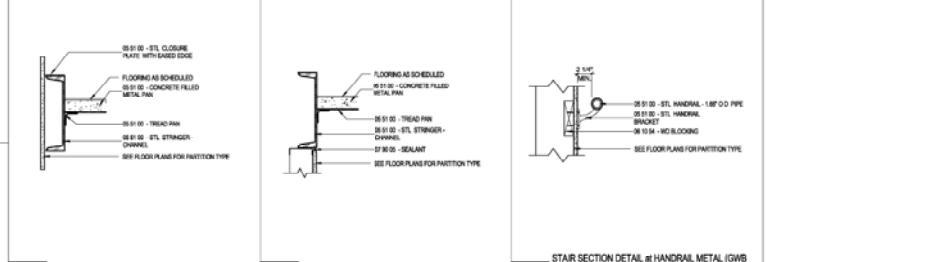
C5 PLAN DETAIL @ SECOND LEVEL CL 9 & B
A4.2 1/12" = 1'-0"



E1 STAIR SECTION DETAIL @ BOTTOM OF STAIR
A4.2 1/12" = 1'-0"

E3 STAIR SECTION DETAIL @ TOP OF STAIR LANDING
A4.2 1/12" = 1'-0"

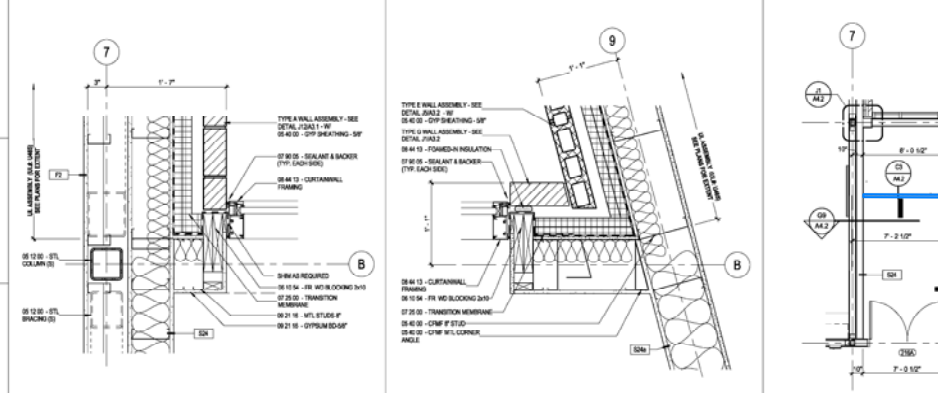
E5 STAIR SECTION DETAIL @ BOTTOM OF STAIR LANDING
A4.2 1/12" = 1'-0"



G1 STAIR SECTION DETAIL @ PART. ALONG STRINGER
A4.2 1/12" = 1'-0"

G3 STAIR SECTION DETAIL @ PART. BELOW STRINGER
A4.2 1/12" = 1'-0"

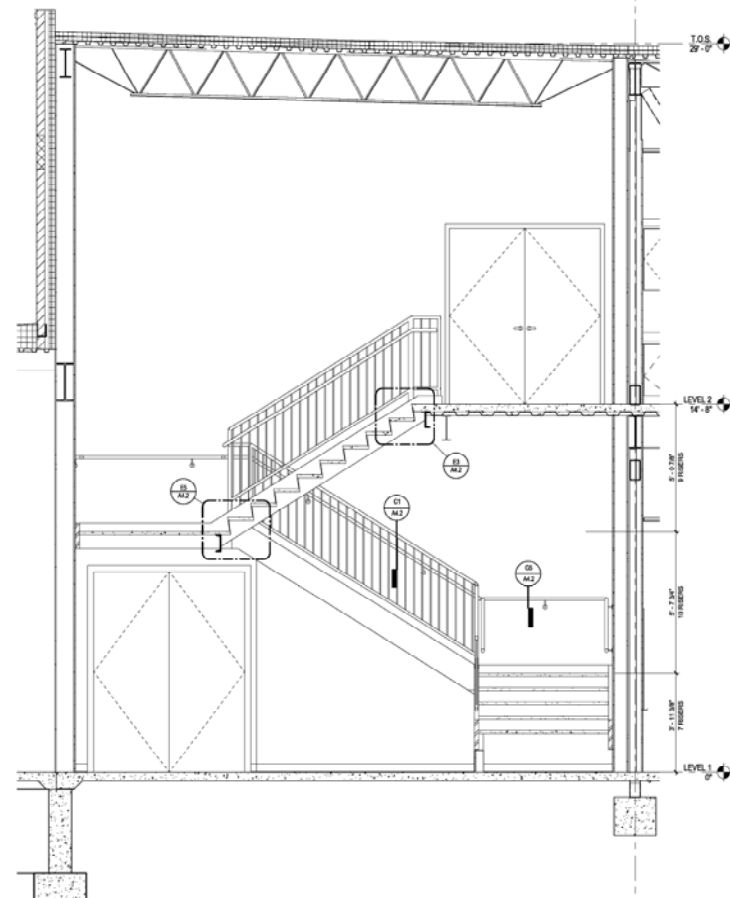
G5 STAIR SECTION DETAIL @ HANDRAIL METAL (GWB) MOUNTED
A4.2 1/12" = 1'-0"



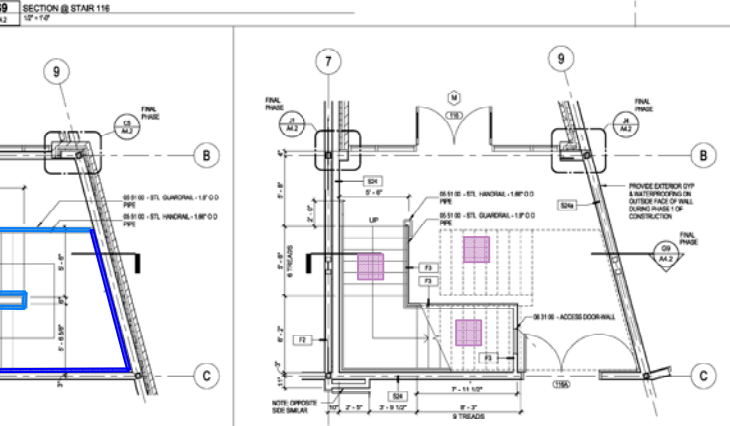
J1 PLAN DETAIL @ CL 7 & B
A4.2 1/12" = 1'-0"

J4 PLAN DETAIL @ CL 8 & B
A4.2 1/12" = 1'-0"

J7 ENLARGED PLAN - PHASE 2 @ STAIR 216
A4.2 1/12" = 1'-0"



G9 SECTION @ STAIR 116
A4.2 1/12" = 1'-0"



J11 ENLARGED PLAN - PHASE 1 @ STAIR 116
A4.2 1/12" = 1'-0"

LAVALLEE/BRENSINGER ARCHITECTS

155 Dow Street, Suite 400, Manchester, NH 03101
45 Cambridge Street, Cheshire, MA 01519
NH 603.622.2400 MA 617.398.2320 www.LBPA.com

Rochester School Department

East Rochester
Elementary School

773 Portland Street
Rochester, NH 03668

NO.	DESCRIPTION	DATE

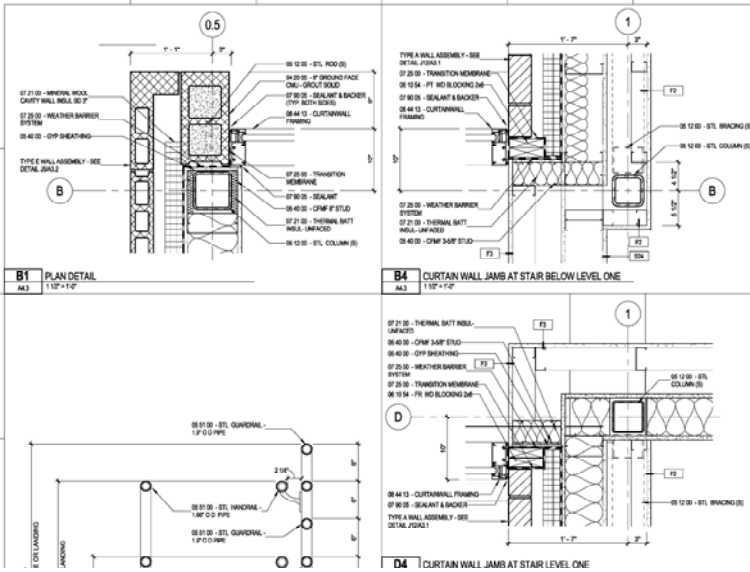
CONTENT:
STAIR PLANS, SECTIONS, AND DETAILS

DESIGNED BY: RM
PROJECT NO: 13-023-30
DATE: 06-01-2014
REVISED: SX
SCALE: As Indicated

A4.2

Project Files
CONSTRUCTION DOCUMENTS

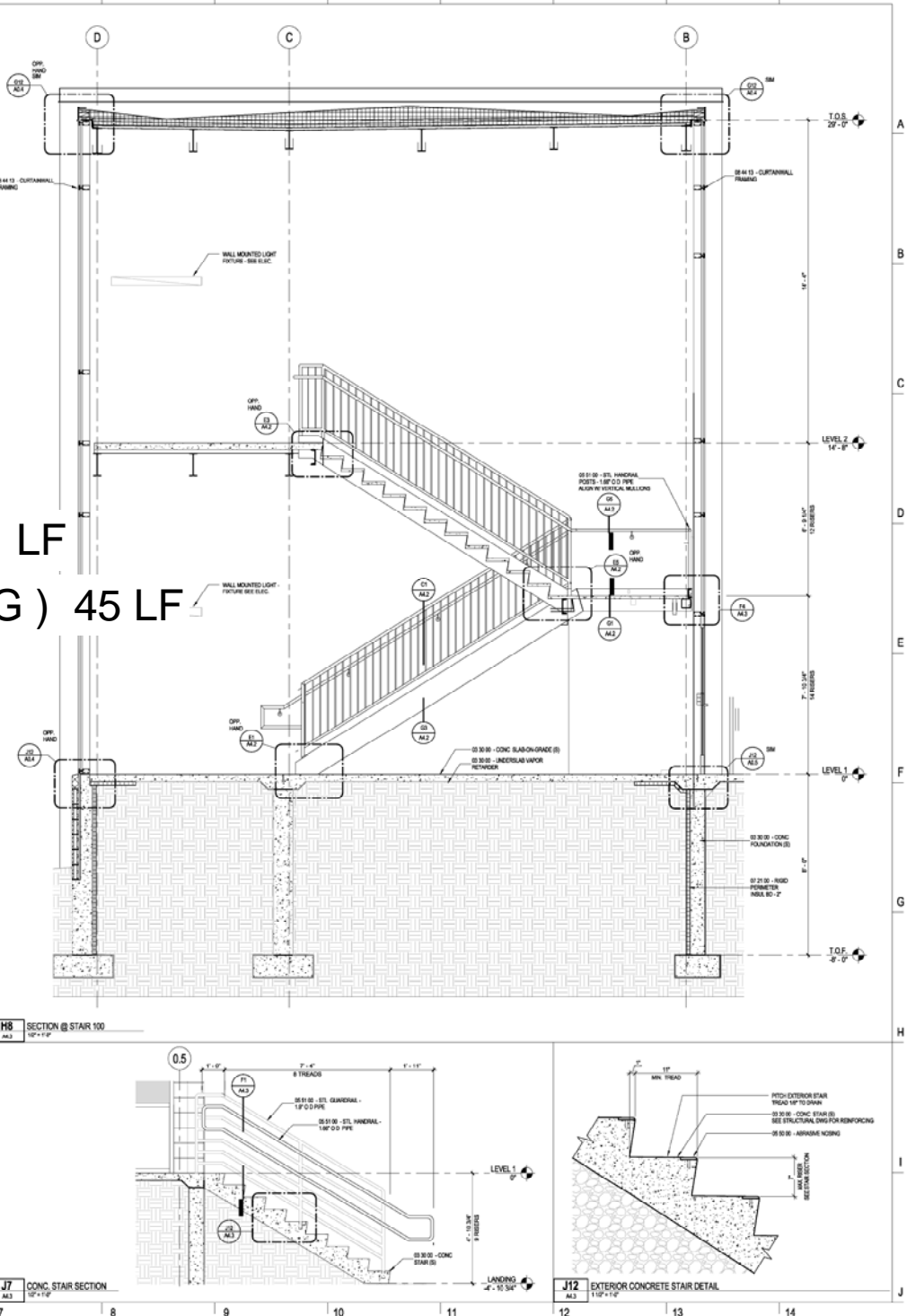
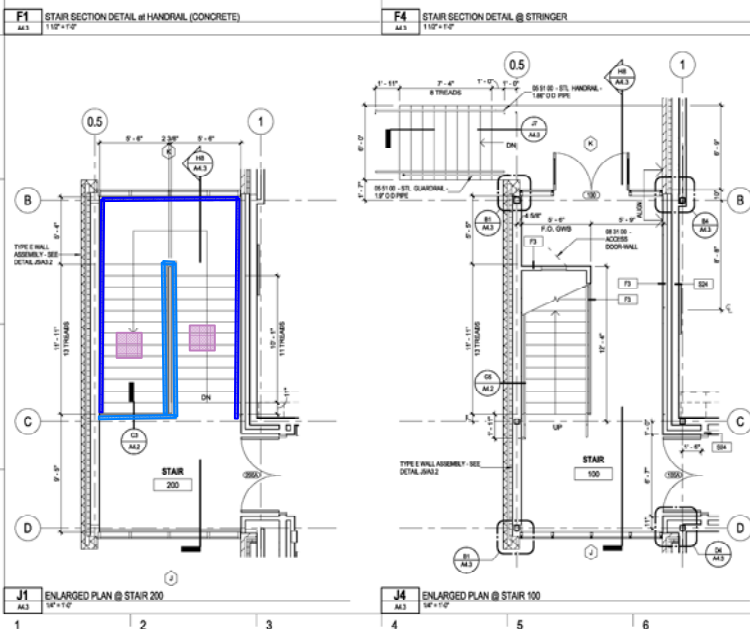
Copyright 2014 by L.A. Vallee/Brensinger Architects, Inc.
All rights reserved. No reproduction without permission.



RAILINGS (PICKET RAILING) 31 LF

RAILINGS (1 RUNG PIPE RAILING) 45 LF

INTERIOR STAIR FLIGHTS 2 EA



NO.	DESCRIPTION	DATE

CONTENT:	STAIR PLANS, SECTIONS, AND DETAILS
DRAWN BY:	MM
PROJECT NO:	13-023-30
DATE:	04-01-2014
REVISED:	XX
SCALE:	As Indicated
A4.3	
Project Name:	
CONSTRUCTION DOCUMENTS	
COPYRIGHT © 2014 BY L.A. VALLEE/BRENSINGER ARCHITECTS. ALL RIGHTS RESERVED. NO REPRODUCTION WITHOUT PERMISSION.	